



GOUGH
PLASTICS

PROVIDING INNOVATIVE SOLUTIONS SINCE 1989



PRODUCT CATALOGUE

2024 V1

GOUGH PLASTICS
ONFARM DIESEL UNITS

Australian made, on-site, stationary diesel tanks ideal for safely storing and dispensing diesel.

Built with lockable pump compartments to prevent unauthorised use, this fast flow diesel pump will get your vehicle fueled up and back on the go.

Available as a Tank only, Tank and Piusi Pump or Tank, Pump and Skid Base.



5,000L OnFarm Diesel Unit
Length: 1,900mm
Width: 2,350mm
Height: 2,700mm

- Impact resistant and non-rusting polyethylene tank
- Italian made Piusi Diesel Pump Kit with two year warranty
- Auto shut-off, heavy-duty dispensing nozzle to prevent overfilling
- Static grounding system
- 25mm anti-kink, diesel-grade delivery hose
- Three digit mechanical flow meter
- 2" fast fill point and anti-splash tube
- Vent fitting has gauze fitted to prevent vermin
- Tank level indicator
- Water filter included
- 12V 80LPM 4m hose, 240V 56LPM 6m hose or 240V 90LPM 8m hose
- Optional hot-dipped galvanised skid frame
- ASNZS 1940-2017 compliant when used with a compliant bund or compound



3,000L OnFarm Diesel Unit
Length: 1,900mm
Width: 2,350mm
Height: 2,180mm



10,000L OnFarm Diesel Unit
Length: 3,020mm
Width: 2,590mm
Height: 2,450mm



Dimensions may vary by plus or minus 3% due to the rotational moulding process.

GOUGH PLASTICS
CARTAGE TANKS AND TRAILERS



ONLINE STORE



Trailers available directly from our factory

Designed and manufactured by Gough Plastics, our Cartage Tank Trailers are hot-dip galvanised and available for our 400L to 2,000L Cartage Tank range.

Our highly skilled team can customise a cartage tank and trailer unit specially for your needs.

Unit Optional Extras

- Diesel Powered Pump
- LED Indicators
- Creek Fill Kit
- Baffle Balls
- Road Legal



1,000L WATER CART TRAILER UNIT INC TRAILER, TANK, PUMP AND HOSE REEL KIT



WATER OR DIESEL OPTION

1,000L Tank Trailer
Length: 3,845mm
Width: 1,700mm
Deck Height: 578mm
FFAR500.4010.1

1,500L WATER CART TRAILER UNIT INC TRAILER, TANK, PUMP AND HOSE REEL KIT



WATER OR DIESEL OPTION

1,500L Tank Trailer
Length: 4,235mm
Width: 1,900mm
Deck Height: 671mm
FFAR500.4010.15

2,000L WATER CART TRAILER UNIT INC TRAILER, TANK, PUMP AND HOSE REEL KIT



WATER OR DIESEL OPTION

2,000L Tank Trailer
Length: 4,565mm
Width: 1,898mm
Deck Height: 671mm
FFAR500.4010.2



LARGE



SMALL

Surge Stoppers
BMAM012 (Large)
BMAM023 (Small)

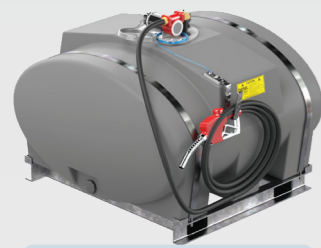


Quick Fill Suction Kit
FFAR500.4003

Dimensions may vary by plus or minus 3% due to the rotational moulding process.

SKID-MOUNTED DIESEL CARTAGE UNITS

Steel mounting frames are hot-dip galvanised and forkliftable.



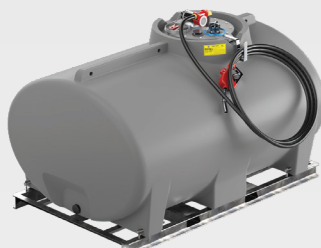
640L Length: 1,220mm
Width: 1,160mm
Height: 735mm



1,000L Length: 1,599mm
Width: 1,200mm
Height: 1,014mm



1,500L Length: 1,700mm
Width: 1,350mm
Height: 1,060mm



2,000L Length: 2,100mm
Width: 1,400mm
Height: 1,163mm



3,000L Length: 2,400mm
Width: 1,570mm
Height: 1,388mm



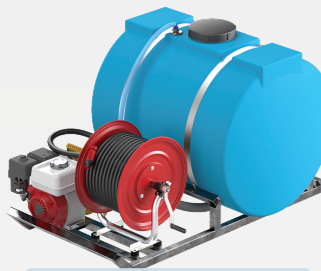
5,000L Length: 2,400mm
Width: 2,050mm
Height: 1,728mm



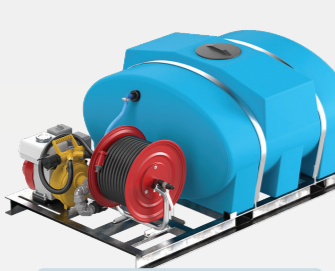
DIESEL PUMP AND HOSE KIT

SKID-MOUNTED WATER CART UNITS

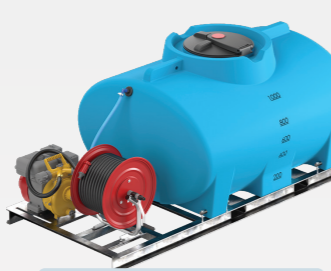
Steel mounting frames are hot-dip galvanised and forkliftable.



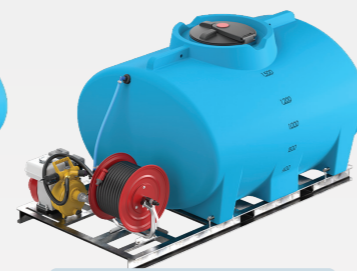
400L Length: 1,450mm
Width: 1,000mm
Height: 950mm



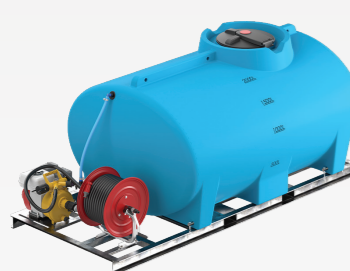
640L Length: 1,745mm
Width: 1,220mm
Height: 800mm



1,000L Length: 2,215mm
Width: 1,220mm
Height: 1,100mm



1,500L Length: 2,270mm
Width: 1,350mm
Height: 1,160mm



2,000L Length: 2,695mm
Width: 1,440mm
Height: 1,200mm



3,000L Length: 2,800mm
Width: 1,580mm
Height: 1,450mm



5,000L Length: 2,800mm
Width: 2,050mm
Height: 1,800mm

Dimensions may vary by plus or minus 3% due to the rotational moulding process.

WATER, CHEMICAL, MOLASSES CARTAGE TANKS

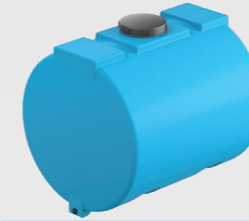


ONLINE STORE

Blue =
Water Cartage Tanks

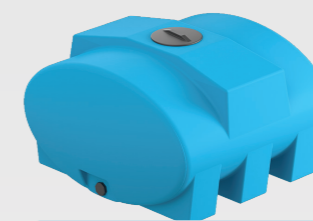
White =
Chemical Cartage Tanks

Black =
Molasses Cartage Tanks



400L Length: 1,000mm
Width: 800mm
Height: 845mm

Water: FFAR500.0401
Chemical: FFAR500.0405



640L Length: 1,220mm
Width: 1,160mm
Height: 735mm

Water: FFAR500.0601
Chemical: FFAR500.0605
Molasses: FFAR500.0604



1,000L Length: 1,599mm
Width: 1,200mm
Height: 934mm

Water: FFAR500.1101
Chemical: FFAR500.1105
Molasses: FFAR500.1104



1,500L Length: 1,700mm
Width: 1,350mm
Height: 1,060mm

Water: FFAR500.1500
Chemical: FFAR500.1503
Molasses: FFAR500.1502



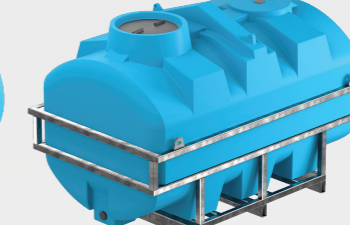
2,000L Length: 2,100mm
Width: 1,400mm
Height: 1,134mm

Water: FFAR500.2021
Chemical: FFAR500.2025
Molasses: FFAR500.2024



3,000L Length: 2,400mm
Width: 1,570mm
Height: 1,359mm

Water: FFAR500.3031
Chemical: FFAR500.3035
Molasses: FFAR500.3034



2,750L in frame (with sump) Length: 2,325mm
Width: 1,405mm
Height: 1,566mm

Water: FFAR500.3301
Chemical: FFAR500.3305
Molasses: FFAR500.3304



5,000L Length: 2,400mm
Width: 2,050mm
Height: 1,699mm

Water: FFAR500.5051
Chemical: FFAR500.5055
Molasses: FFAR500.5054

Please refer to page 16 for available fittings.

WATERSMART TROUGHS

Ideal water troughs for cattle, horses and other livestock

- Perfectly suited to small numbers of animals
- Simple installation, light-weight and user-friendly
- High quality float valve with 1" male connection
- The float is out of the water
- UV-stabilised, food-grade plastic for long life
- Recess for your external pipework giving added protection
- Designed to stack for transport

WaterSmart Trough and Valve				
Part Number	Size	Diameter	Height	Weight
FFAR800.4200	200L	1025mm	460mm	18kg
FFAR800.4400	400L	1200mm	580mm	25kg
FFAR800.4600	600L	1480mm	580mm	32kg

Dimensions may vary by plus or minus 3% due to the rotational moulding process.

Proudly supporting *beyondblue* with each blue float cover sold

Proudly supporting the *National Breast Cancer Foundation's* research programs with each pink float cover sold



GOUGH PLASTICS
FEEDSMART TROUGHS



Ideal troughs for water, drylick, molasses and grain.
We have a size for every need!

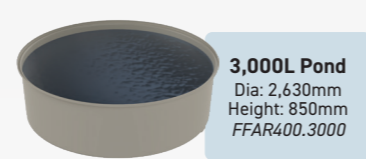


Stock Feed and Water Troughs - Round			
Part Number	Size	Diameter	Height
FFAR800.1000RGB	50L	650mm	350mm
FMAM500.1700VGN	170L	725mm	585mm
FFAR800.1100RGB	200L	1,150mm	315mm
FFAR800.1251RGB	380L	1,250mm	400mm
FFAR800.1250RGB	450L	1,250mm	540mm
FFAR800.1600RGB	600L	1,285mm	600mm
FFAR800.1750RGB	750L	1,570mm	570mm
FFAR800.2100RGB	2,300L	2,500mm	600mm

Stock Feed and Water Troughs - Rectangular			
Part Number	Size	L x W x H	
FFAR800.1300RGB	350L	2,160 x 700 x 340mm	
FFAR800.1480RGB	480L	2,180 x 900 x 392mm	
FFAR900.0008	750L	2,410 x 1,120 x 480mm	

380L - 600L FeedSmart Trough Cover			
Part Number	Colour	Diameter	Height
FFAR800.1610	Recycled Black	1,320mm	150mm
FFAR800.1611	Yellow	1,320mm	150mm
FFAR800.1611	Blue	1,320mm	150mm
FFAR800.1611	Grey	1,320mm	150mm

MORE COLOURS OPTIONS



Dimensions may vary by plus or minus 3% due to the rotational moulding process.

GOUGH PLASTICS
ALLPOLY FEEDER



Our revolutionary cattle feed shelter designed to protect feed from wet weather conditions and never rust

Easy to assemble and fill with two complete poly parts, roof and base, that cleverly fit together with four poly pins, there's no need for bolts. Just pop the pins in and twist to lock or unlock. No stress, no sweat, and no rust!

Rainwater from the roof flows down the hollow legs of the feeder to the feet and is dispersed away from the unit.

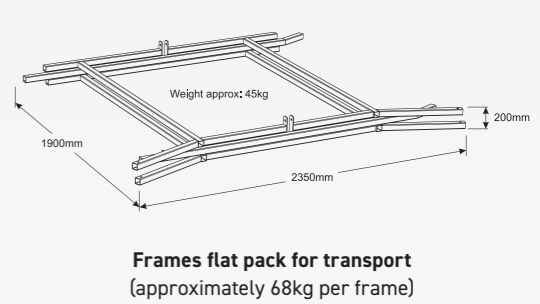
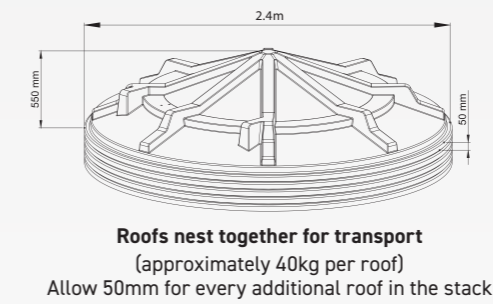
The AllPoly Feeder accommodates a 330L, 450L or 550L trough which locks securely into place within the unit.



GOUGH PLASTICS
LICKROOF

Cattle feed shelter designed to protect lick supplement from wet weather conditions

- Roofs, frames and troughs nest together for easy transport
- For shorter cattle, the frame legs can be cut to lower the height
- Sold as a complete unit or as individual components



Dimensions may vary by plus or minus 3% due to the rotational moulding process.

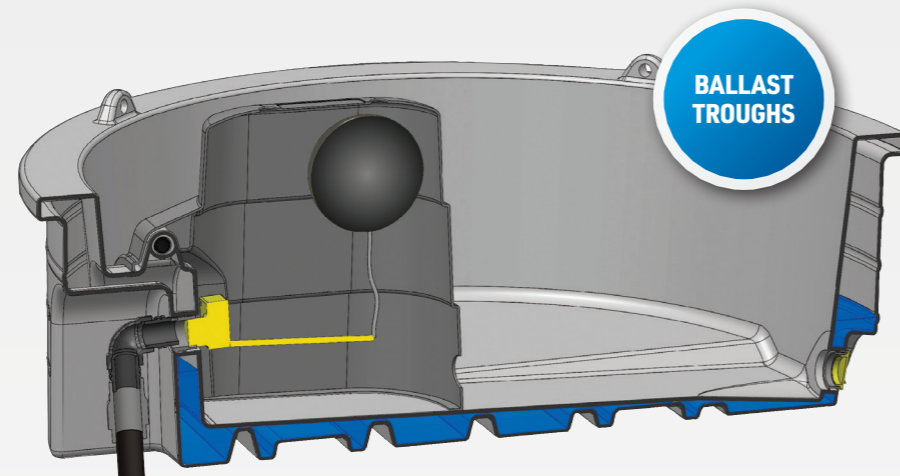


Long, short, wide or round, there's a Gough Plastics MegaTrough just right for your paddock!

- Light-weight to transport and install by yourself
- Heavy-duty ribbed design to handle being knocked around
- Easy to empty and relocate
- The grey colour helps keep the water cooler
- Unique water ballast system within the hollow cavity

Our unique water ballast system for MegaTroughs

Water ballast makes the trough heavy once in place and filled, ensuring cattle can't move the trough. This is ideal for permanent installations.



Low Conxion Kit
Suitable for 2.4m and Round MegaTroughs
FFAR800.8001



High Conxion Kit
Suitable for 3m and 6m Long MegaTroughs
FFAR800.5000

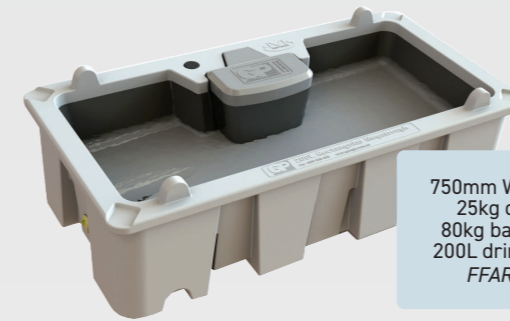


Dimensions may vary by plus or minus 3% due to the rotational moulding process.



ONLINE STORE

1.5m MegaTrough



750mm W x 400mm H
25kg dry weight
80kg ballast weight
200L drinkable water
FFAR800.1505



2.4m MegaTrough

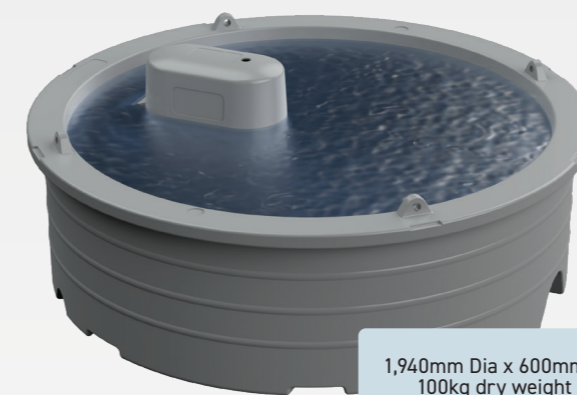


1,200mm W x 600mm H
100kg dry weight
300kg ballast weight
1,000L drinkable water
FFAR800.2600

Registered Design No. 201510875



Round MegaTrough



1,940mm Dia x 600mm H
100kg dry weight
300kg ballast weight
1,000L drinkable water

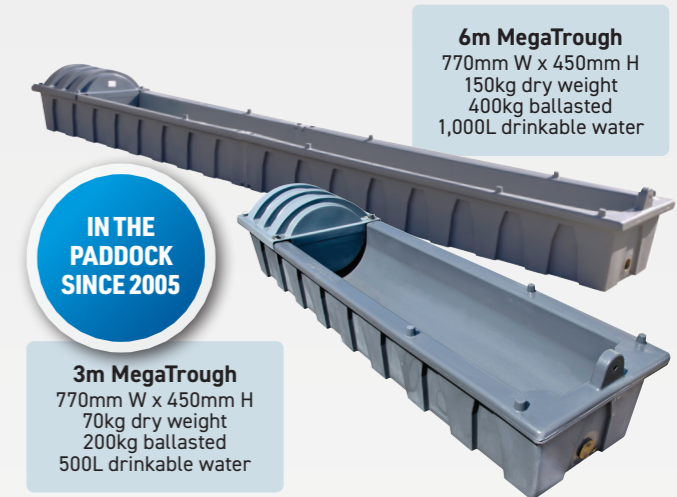
Registered Design No. 201214377

Round MegaTrough	
Part Number	Description
FFAR800.7000.1	1,000L Round MegaTrough
FFAR800.8000	Round & 2.4m Float Cover
FFAR800.8001	Conxion Kit

Allowing 2ft per beast, approx 10 head will fit around this trough.

Dimensions may vary by plus or minus 3% due to the rotational moulding process.

Long MegaTroughs



6m MegaTrough
770mm W x 450mm H
150kg dry weight
400kg ballasted
1,000L drinkable water



3m MegaTrough
770mm W x 450mm H
70kg dry weight
200kg ballasted
500L drinkable water

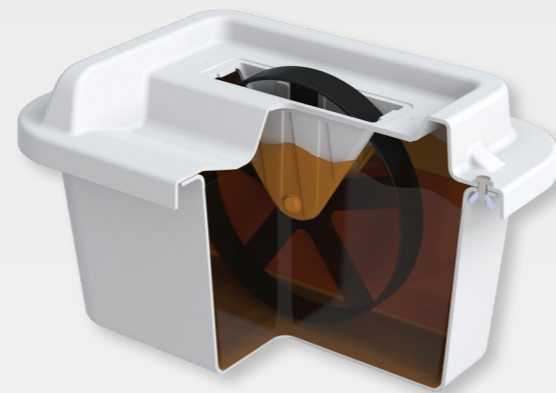
Long MegaTrough	
Part Number	Description
FFAR800.3000.2	3m Long MegaTrough
FFAR800.6000.2	6m Long MegaTrough
FFAR800.5002	Float Cover (length: 760mm)
FFAR800.5000	Conxion Kit

MOLASSES FEEDING WITH MAXIBEAST®



A safe and effective way to feed molasses based supplements

- Eliminate livestock loss from falling in and drowning
- Cattle have to lick the supplement by turning the vertical wheels which help to regulate intake and prevent waste
- Ergonomically designed to make loading a one person job
- Made with translucent material to allow the liquid levels to be monitored from a distance. Other solid colours optional
- Fully pre-assembled by us ready to use
- High quality UV-stabilised Polyethylene construction



MaxiBeast® 750L

Registered Design No. 201912258



Length: 2,410mm
Width: 1,120mm
Height: 775mm
85kg dry weight
FFAR900.0002

Roof Colour Options



Other colours available on request.

- Maximise head per trough with an unrivalled 8 wheels
- May be bulk-filled in the paddock straight from the truck
- Trough and lid secure using 10mm stainless steel wing nuts and bolts for easy lid removal for cleaning
- 750L capacity = 1 tonne molasses (approx.)

MaxiBeast® 35L



Length: 625mm
Width: 405mm
Height: 360mm
5kg dry weight
FFAR900.0088.1

- One wheel for single beasts or small herds
- Trough and lid secure using 10mm stainless steel wing nuts and bolts, making lid removal for filling and cleaning easy
- 35L capacity = 50kg molasses (approx.)

Dimensions may vary by plus or minus 3% due to the rotational moulding process.

MOLASSES FEEDING



ONLINE STORE

Bulkezy

Bulk-fill direct in paddock. Individual feed ports; less bullying, less waste. Allowing 2ft per beast; approximately 11 head will fit around this trough. 2,300L capacity.



Bulkezy Floating Barrier	
Part Number	Description
FFAR800.2500RGB	System, including Barrier and F2300 Trough Combo

EzyLicker

Control liquid feed consumption and slow down your livestock feed-rate with EzyLicker 1060 and 1340. Provides a safe landing place for wildlife.



EzyLicker Floating Licker Disc	
Part Number	Description
FFAR800.2003	EzyLicker 1060 (F380-F600)
FFAR800.2004	EzyLicker 1340 (F750)

FORKLIFTABLE CONTAINERS

Parts Bin

Storage cube and pallet all in one. Weather-resistant. Lockable lid option. Holds approximately 400L.



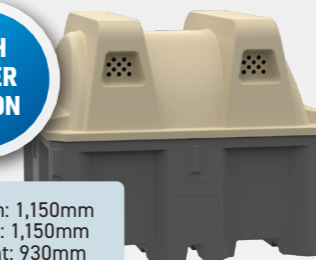
FLAT LID OPTION



Length: 1,100mm
Width: 1,100mm
Height: 510mm
FMAM300.1010



HIGH COVER OPTION



Length: 1,150mm
Width: 1,150mm
Height: 930mm
FMAM300.1025

1,000L Cube

Lockable with access hatch and three lid options.



Length: 1,150mm
Width: 1,054mm
Height: 1,215mm
FMAM300.1000

Plastic Pallet

Easy to clean and ideal for cold rooms and export.



Length: 1,165mm
Width: 1,165mm
Height: 175mm
FMAM300.2000BLK

IBC/Pallet Cover

Durable, weather-resistant protective cover.



Length: 1,240mm
Width: 1,240mm
Height: 200mm
FMAM300.2050

Triangular Fleet Identification Sign

Highly visible, impact-resistant, rust-proof and easy to install (Hi-Vis identification not included).



Length: 525mm
Width: 605mm
Height: 305mm
FMAM700.0602

Dimensions may vary by plus or minus 3% due to the rotational moulding process.

VERTICAL SLIMLINE TANKS

55L Vertical Slimline Wellbody Tanks

- Fits most dual cab utes below tonneau cover
- 1/2" brass BSP outlet
- 55L Mounting Bracket Kit available
- 1,295mm L x 175mm W x 445mm H

Part Number	Description
FBOX408.1005.6	55L Wellbody Bracket Kit
FBOX408.1007.1	Water Hose Kit
FBOX408.1007.2	Diesel Hose Kit
FBOX408.1005.9	55L Water Submersible Pump Kit
FBOX408.1005.8	55L Diesel Submersible Pump Kit
FBOX408.1005.7	55L Water Diaphragm Pump Kit



55L Wellbody Tank Water (Black)
FBOX408.1005



55L Wellbody Tank Water (Non Standard Colour)
FBOX408.1005.2



55L Wellbody Tank Water with Diaphragm Pump
FBOX408.1005.4



55L Wellbody Tank Water with Submersible Pump
FBOX408.1005.3



55L Wellbody Tank Diesel (Grey)
FBOX408.1005.1



55L Wellbody Tank Diesel with Submersible Pump
FBOX408.1005.5

65L Vertical Slimline Canopy Tanks

- For drop-side utes, open tray-backs or canopy
- 1/2" poly BSP outlet
- 65L Mounting Bracket Kit available
- 1,590mm L x 120mm W x 590mm H

Part Number	Description
FBOX408.1006.6	65L Canopy Bracket Kit
FBOX408.1007.1	Water Hose Kit
FBOX408.1007.2	Diesel Hose Kit
FBOX408.1006.9	65L Water Submersible Pump Kit
FBOX408.1006.8	65L Diesel Submersible Pump Kit
FBOX408.1006.7	65L Water Diaphragm Pump Kit



65L Canopy Tank Water (Black)
FBOX408.1006



65L Canopy Tank Water (Non Standard Colour)
FBOX408.1006.2



65L Canopy Tank Water with Diaphragm Pump
FBOX408.1006.4



65L Canopy Tank Water with Submersible Pump
FBOX408.1006.3



65L Canopy Tank Diesel (Grey)
FBOX408.1006.1



65L Canopy Tank Diesel with Submersible Pump
FBOX408.1006.5

Dimensions may vary by plus or minus 3% due to the rotational moulding process.

VEHICLE AND RECREATION



ONLINE STORE

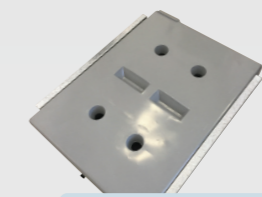


Suitable for most traybacks and trailers. Easy-fit brackets.

Won't chip or dent and built tough to last in Australian conditions.



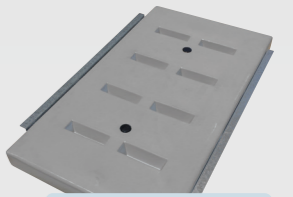
50L Diesel
L x W x D
750 x 810 x 167mm
FBOX405.8050.3



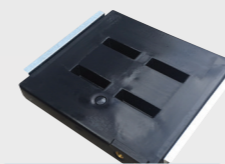
70L Diesel
L x W x D
1,080 x 810 x 168mm
FBOX405.8000.3



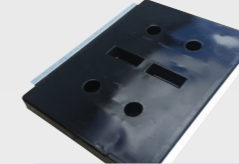
80L Diesel
L x W x D
1,180 x 810 x 167mm
FBOX405.8080.3



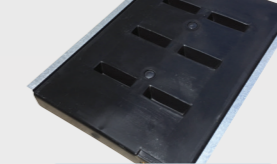
100L Diesel
L x W x D
1,440 x 810 x 167mm
FBOX405.8100.3



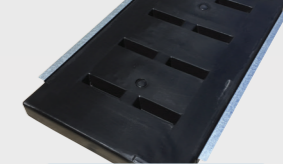
50L Water
L x W x D
750 x 810 x 167mm
FBOX405.8050



70L Water
L x W x D
1,080 x 810 x 168mm
FBOX405.8000



80L Water
L x W x D
1,180 x 810 x 167mm
FBOX405.8080



100L Water
L x W x D
1,440 x 810 x 167mm
FBOX405.8100



Slimline Water Hose Kit
FBOX405.8001



15L Handwash Water Tank
L x W x H
360 x 260 x 330mm
FBOX401.1500



25L Handwash Water Tank
L x W x H
580 x 210 x 420mm
FBOX401.2550



30L Underbody Water Tank
L x W x H
580 x 210 x 420mm
FBOX401.3001 (BLACK)
FBOX401.3002 (GREY)



40L Underbody Water Tank
L x W x H
530 x 260 x 410mm
FBOX401.4001



70L Truck Handwash Water Tank
L x W x H
585 x 385 x 395mm
FBOX404.7000



20L Rectangular Water Tank
L x W x H
300 x 200 x 480mm
FBOX408.0200



60L Rectangular Water Tank
L x W x H
350 x 350 x 550mm
FBOX408.0600



100L Rectangular Water Tank
L x W x H
350 x 350 x 940mm
FBOX408.1000



Holds ropes, straps, jack, and recovery gear. Easy-fit brackets.



30L Underbody Toolbox
L x W x H
580 x 210 x 420mm
FBOX406.3001 (BLACK)
FBOX406.3002 (GREY)

A4 Document Box

Protective and organised storage for documents in vehicles.

Length: 320mm
Width: 150mm
Height: 392mm
FBOX805.0000



A5 Document Box

Protective storage for logbooks and documents on vehicles and equipment.

Length: 335mm
Width: 70mm
Height: 203mm
FBOX805.0010



Dimensions may vary by plus or minus 3% due to the rotational moulding process.

GOUGH PLASTICS
VEHICLE AND RECREATION

- Lockable catches and hinged lid
- Various colours available
- Moulded and riveted handles
- UV-stabilised polyethylene
- Tough, durable and stackable
- Add a mould-on company logo

ASK ABOUT
COLOUR
OPTIONS



T450
Length: 450mm
Width: 450mm
Height: 450mm
FBOX802.6405



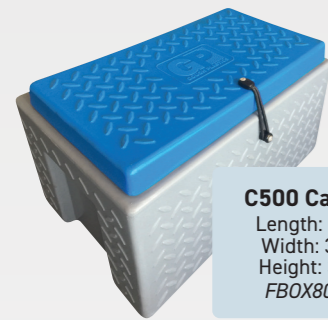
T900 Lowline
Length: 900mm
Width: 550mm
Height: 410mm
FBOX804.9005L



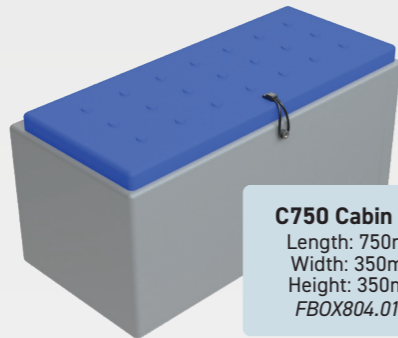
T900 Highline
Length: 900mm
Width: 550mm
Height: 550mm
FBOX804.9005H

Cabin Box

- Interior storage for vehicle cabins
- Keeps tools and ancillaries clean, organised and secure



C500 Cabin Box
Length: 500mm
Width: 312mm
Height: 315mm
FBOX804.0177



C750 Cabin Box
Length: 750mm
Width: 350mm
Height: 350mm
FBOX804.0178



C1500 Cabin Box
Length: 1,500mm
Width: 350mm
Height: 350mm
FBOX804.0176

GOUGH PLASTICS
GREY WATER TRANSFER TANKS

200L Grey Water Transfer Tank

- Diameter: 560mm
Height: 900mm
- 50mm outlet standard at 850mm from base (customisable)
- 100mm inlet standard at 400mm from base (customisable)



FENV900.0200

600L Grey Water Transfer Tank

- Diameter: 815mm
Height: 1,315mm
- 50mm outlet standard at 940mm from base (customisable)
- 100mm inlet standard at 400mm from base (customisable)



FENV900.0100

All Grey Water Tanks include Davey D15VA pump hold down plates at base. Gough Plastics Grey Water Tanks must be installed by a licensed plumber.

Dimensions may vary by plus or minus 3% due to the rotational moulding process.

GOUGH PLASTICS
ROUND AND SLIMLINE RAINWATER TANKS



ONLINE STORE



The freedom to water your way. Conserve Australia's most precious resource and help with your water needs.



Part Number	Litres	Dia	Height
FTAN.ST10000	10,000L	2.59m	2.28m
FTAN.ST09000	9,000L	2.45m	2.21m
FTAN.ST07500	7,500L	2.25m	2.20m
FTAN.ST05500	5,500L	2.41m	1.52m
FTAN.TL05000	5,000L Tall	1.75m	2.35m
FTAN.ST05000	5,000L Short	2.05m	1.82m

Part Number	Litres	Dia	Height
FTAN.ST03000	3,000L	1.60m	1.85m
FTAN.ST02500	2,500L	1.60m	1.52m
FTAN.ST02000	2,000L Tall	1.10m	2.48m
FTAN.ST01500	1,450L	1.25m	1.32m
FTAN.TL01000	1,000L Tall	0.90m	1.85m
FTAN.ST00600	600L	0.91m	1.27m



Part Number	Litres	Length	Width	Height
FTAN.SL05000	5,000L Slim	2.60m	1.26m	2.10m
FTAN.SLC05000	5,000L Slim Combo	4.50m	0.90m	1.85m
FTAN.SL03000	3,000L Slim	2.70m	0.85m	2.10m
FTAN.SL02000	2,000L Slim	1.65m	0.79m	2.15m
FTAN.SL01350	1,350L Slim	1.65m	0.79m	1.67m
FTAN.ST00375	375L Eaves	1.19m	0.60m	0.79m

Flex Connection Kits

- Kits consist of flexi hose, s/s valve, hose clamps and thread tape
- 2" Kit standard on all 10,000L tanks
- 1" Kit is an optional extra on all other tanks

1" Outlet Kit
FTAN204.0059
2" Outlet Kit
FTAN204.0058



Our Rainwater Tanks are manufactured from food-grade PE.

Dimensions may vary by plus or minus 3% due to the rotational moulding process.

CHEMICAL STORAGE

Chemical, Sullage, Process, Balance and Sludge Tanks

- Sizes from 375L to 10,000L
- Moulded thicker to handle high specific gravity liquids
- All tanks subject to chemical compatibility
- 3", 4", 6" connection kits
- Level indicators
- Fill pipes
- Valves



375L 10,000L

205L Drum and Lid

- Heavy-duty storage applications
- Chemical and corrosion resistant
- Various colours available
- Weather-resistant
- Add a mould-on company logo
- Drum Lid protects chemicals from spillage and the elements during transportation
- Lid strap channels enable drums to be easily secured for transport

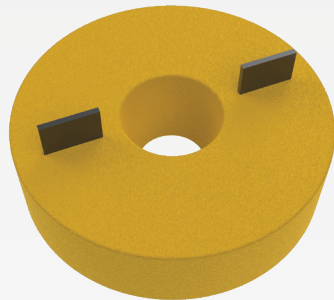


205L Drum
(44 Gal)

Diameter: 565mm
Height: 905mm
Drum *FMAM500.1900*
Lid *FMAM300.3306*

GOUGH PLASTICS DAM FLOATS

Float designed for pumps on dams, with either in-line or off-set tabs.



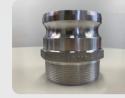
Diameter: 550mm
Height: 195mm
Volume: 30L
Max. Rec. Payload: 15kg
FFAR800.0100

Dimensions may vary by plus or minus 3% due to the rotational moulding process.

Quality Fittings



Camlock
2" ALU Type DC



Camlock
2" ALU Type F



Camlock
1 1/2" PP Type A



Camlock
1 1/2" PP Type C



Camlock
1 1/2" PP Type DC



Camlock
1 1/2" PP Type F



Butterfly Valves
2", 3", 4", 5" and 6"



Ball Valves
Plated brass 2", 3" and 4"



Brass Bulkheads
Suit water applications
1" and 2"



Poly Bulkheads
Suit chemical applications
1" and 2"



Screw Hatch
455mm diameter
Smart vent hinging



Strainer Basket
455mm diameter, 210mm deep
Suits 455mm screw hatch



Moulded-in Inserts
Brass BSP female thread 2", 3" and 4"
Stainless BSP female thread 2", 3" and 4"



Stub Flanges (weld-in)
With galvanised backing ring 4" and 6"
With stainless backing ring 4" and 6"



Sight Tube Kit
Clear PVC flexible tubing
2 x 1" poly elbows
2 x s/s hose clamps
2 x 1" poly bulkheads