



# MINING & INDUSTRIAL CATALOGUE



**PARTS BIN**



**WATER TANKER**



**BELTCOVER**



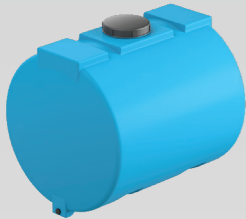
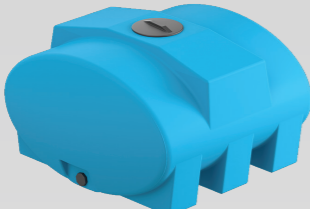

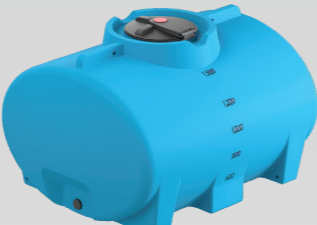


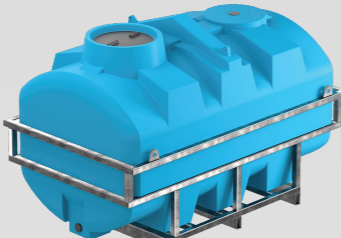
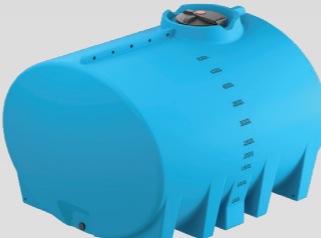
**ECODOSE 400**



**PROVIDING INNOVATIVE SOLUTIONS**






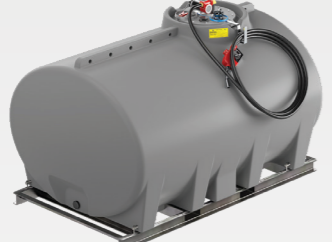


GOUGH PLASTICS  
**WATER AND CHEMICAL CARTAGE TANKS**

Standard colour of Water Cartage Tanks is **BLUE** (shown below) and Chemical Cartage Tanks are **WHITE**.

			
<b>400L</b> Length: 1,000mm Width: 800mm Height: 845mm Water: FFAR500.0401 Chemical: FFAR500.0405	<b>640L</b> Length: 1,220mm Width: 1,160mm Height: 735mm Water: FFAR500.0601 Chemical: FFAR500.0605	<b>1,000L</b> Length: 1,599mm Width: 1,200mm Height: 934mm Water: FFAR500.1101 Chemical: FFAR500.1105	<b>1,500L</b> Length: 1,700mm Width: 1,350mm Height: 1,060mm Water: FFAR500.1500 Chemical: FFAR500.1503
			
<b>2,000L</b> Length: 2,100mm Width: 1,400mm Height: 1,134mm Water: FFAR500.2021 Chemical: FFAR500.2025	<b>3,000L</b> Length: 2,400mm Width: 1,570mm Height: 1,359mm Water: FFAR500.3031 Chemical: FFAR500.3035	<b>3,000L in frame (with sump)</b> Length: 2,325mm Width: 1,405mm Height: 1,566mm Water: FFAR500.3301 Chemical: FFAR500.3305	<b>5,000L</b> Length: 2,400mm Width: 2,050mm Height: 1,699mm Water: FFAR500.5051 Chemical: FFAR500.5055

GOUGH PLASTICS  
**SKID-MOUNTED DIESEL CARTAGE UNITS**

Diesel Cartage Tanks shown with optional Skid and Diesel Pump and Hose Kit.

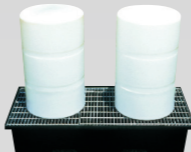
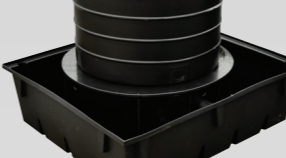
			
<b>640L</b> Length: 1,220mm Width: 1,160mm Height: 735mm	<b>1,000L</b> Length: 1,599mm Width: 1,200mm Height: 1,014mm	<b>1,500L</b> Length: 1,700mm Width: 1,350mm Height: 1,060mm	
			
<b>2,000L</b> Length: 2,100mm Width: 1,400mm Height: 1,163mm	<b>3,000L</b> Length: 2,400mm Width: 1,570mm Height: 1,388mm	<b>5,000L</b> Length: 2,400mm Width: 2,050mm Height: 1,728mm	

Dimensions may vary by plus or minus 3% due to the rotational moulding process. For our full price list, go to [www.gough.com.au/price-list.htm](http://www.gough.com.au/price-list.htm). Prices may be subject to change without notice.

GOUGH PLASTICS  
**CHEMICAL STORAGE**

**Chemical Bunding**

- Tank Bunds
- Bulk Chemical Tank Bunds
- 205L Drum Bunds

	<b>330L Bund</b> Length: 1675mm Width: 760mm Height: 400mm		<b>1800L Bund</b> Length: 2100mm Width: 1800mm Height: 600mm
---	---	---	---

Chemical Bunding	
Part Number	Description
FMAM300.330002	Fabricated Drum Stand (excl. grate, bund and drums)
FMAM300.3305	330L Drum Bund only (excl. grate, stand and drums)
FMAM300.3300	330L Drum Bund with grate, suits 2 x 205L (excl. drums)
FMAM300.3400	1,800L Bulk Box Bund (excl. grate)

**205L Drum**

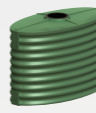
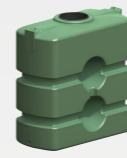



- Heavy-duty storage applications.
- Chemical and corrosion resistant.
- Various colours available.
- Weather-resistant.
- Add a mould-on company logo.

<b>205L Drum (44 Gal)</b>	Diameter: 565mm Height: 905mm FMAM500.1900
---------------------------	--



**Chemical, Sullage, Process, Balance and Sludge Tanks**

- Moulded thicker to handle high specific gravity liquids.
- All tanks subject to chemical compatibility.
- 3", 4", 6" connection kits.
- Fill pipes.
- Valves.
- Level indicators.
- Sizes from 375L to 10,000L.

				
375L				10,000L

Dimensions may vary by plus or minus 3% due to the rotational moulding process. For our full price list, go to [www.gough.com.au/price-list.htm](http://www.gough.com.au/price-list.htm). Prices may be subject to change without notice.

**Custom Industrial Applications**

Utilising our range of moulded tanks combined with plastic welding and fabrication expertise allows us to create custom industrial arrangements to suit your needs.

- Storage banks
- Treatments systems
- Filtration/aeration systems
- Agitation stations

Custom fit out accessories include:

- Level indicators
- Stand pipes
- Vents
- Baffles
- Valve manifolds
- Distribution chambers



**EcoDose 400 Dosing Station**

- Contains accidental spillage and allows easy spillage pumping.
- Keeps rainwater and wildlife away from chemical storage.

<b>EcoDose 400</b>	Length: 1,800mm Width: 1,180mm Height: 1,276mm FMAM400.0001
--------------------	--



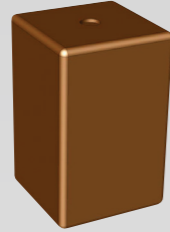
GOUGH PLASTICS  
**UNDERBODY TUFF-A-TANKS**



- Suitable for most traybacks and trailers with easy-fit brackets.
- Won't chip or dent.



**20L Underbody Rectangular Tank**  
Length: 300mm  
Width: 200mm  
Height: 480mm  
FBOX408.0200



**60L Underbody Rectangular Tank**  
Length: 350mm  
Width: 350mm  
Height: 550mm  
FBOX408.0600



**15L Handwash Water Tank**  
Length: 360mm  
Width: 260mm  
Height: 330mm  
FBOX401.1500



**24L Underbody Water Tank**  
Length: 425mm  
Width: 205mm  
Height: 309mm  
FBOX401.2500



**25L Handwash Water Tank**  
Length: 580mm  
Width: 210mm  
Height: 420mm  
FBOX401.2550



**30L Underbody Water Tank**  
Length: 580mm  
Width: 210mm  
Height: 420mm  
FBOX401.3001 (BLACK)  
FBOX401.3002 (GREY)



**40L Underbody Water Tank**  
Length: 530mm  
Width: 260mm  
Height: 410mm  
FBOX401.4001

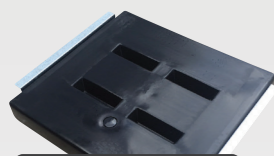


**70L Truck Handwash Water Tank**  
Length: 585mm  
Width: 385mm  
Height: 395mm  
FBOX404.7000

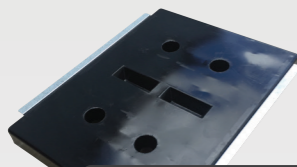


GOUGH PLASTICS  
**UNDERBODY SLIMLINE TANKS**

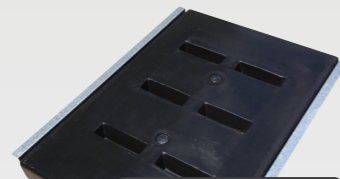
**Slimline Water Hose Kit**  
FBOX405.8001



**50L Water**  
Length: 750mm  
Width: 810mm  
Depth: 167mm  
FBOX405.8050



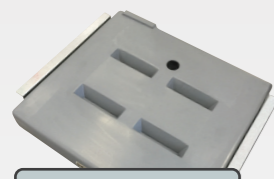
**70L Water**  
Length: 1,080mm  
Width: 810mm  
Depth: 168mm  
FBOX405.8000



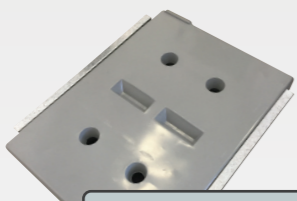
**80L Water**  
Length: 1,180mm  
Width: 810mm  
Depth: 167mm  
FBOX405.8080



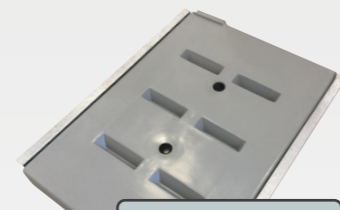
**100L Water**  
Length: 1,440mm  
Width: 810mm  
Depth: 167mm  
FBOX405.8100



**50L Diesel**  
Length: 750mm  
Width: 810mm  
Depth: 167mm  
FBOX405.8050.3



**70L Diesel**  
Length: 1,080mm  
Width: 810mm  
Depth: 168mm  
FBOX405.8000.3



**80L Diesel**  
Length: 1,180mm  
Width: 810mm  
Depth: 167mm  
FBOX405.8080.3



**100L Diesel**  
Length: 1,440mm  
Width: 810mm  
Depth: 167mm  
FBOX405.8100.3

Dimensions may vary by plus or minus 3% due to the rotational moulding process.  
For our full price list, go to [www.gough.com.au/price-list.htm](http://www.gough.com.au/price-list.htm). Prices may be subject to change without notice.

GOUGH PLASTICS  
**TUFF-A-BOXES**

**T900 Highline**  
Length: 900mm  
Width: 550mm  
Height: 550mm  
FBOX804.9000H

**T900 Lowline**  
Length: 900mm  
Width: 550mm  
Height: 410mm  
FBOX804.9000L



**T1200 Lowline**  
Length: 1200mm  
Width: 550mm  
Height: 410mm  
FBOX804.1200L

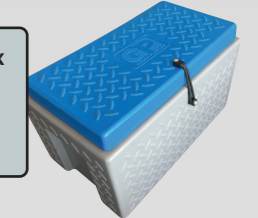
**T450**  
Length: 450mm  
Width: 450mm  
Height: 450mm  
FBOX802.6400

**T1200 Highline**  
Length: 1200mm  
Width: 550mm  
Height: 550mm  
FBOX804.1200H

- Lockable catches and hinged lid.
- UV-stabilised polyethylene.
- Various colours available.
- Tough, durable and stackable.
- Water and dust resistant seal.
- Add a mould-on company logo.



**C1500 Cabin Box**  
Length: 1500mm  
Width: 350mm  
Height: 350mm  
FBOX804.0175



**C500 Cabin Box**  
Length: 500mm  
Width: 312mm  
Height: 315mm  
FBOX804.0177

- Interior storage for vehicle cabins.
- Ideal for stowing gear behind seats.

**Document Box**

Protective storage for documents in vehicles. Water and dust resistant.



Length: 320mm  
Width: 150mm  
Height: 392mm  
FBOX805.0000

**A5 Logbook Box**

Protective storage for documents on vehicles and outdoor equipment.



Length: 335mm  
Width: 70mm  
Height: 203mm  
FBOX805.0010

**Tag Box**

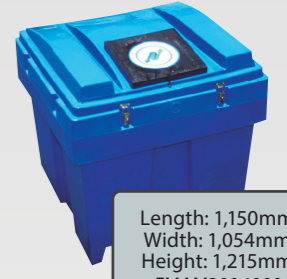
Universal wall-mounted storage box. Strong and robust.



Length: 450mm  
Width: 150mm  
Height: 250mm  
FMAM700.0600.01

**1,000L Cube**

Forkliftable and lockable. Access hatch with hinged, fixed or removable lid options.



Length: 1,150mm  
Width: 1,054mm  
Height: 1,215mm  
FMAM300.1000

GOUGH PLASTICS  
**UNDERBODY TUFF-A-BOXES**



- Holds ropes, straps, jack, gloves and recovery gear.
- Easy-fit bracket.



**24L Underbody Toolbox**  
Length: 425mm  
Width: 205mm  
Height: 309mm  
FBOX406.2400



**40L Underbody Toolbox**  
Length: 530mm  
Width: 275mm  
Height: 410mm  
FBOX406.4000



**30L Underbody Toolbox**  
Length: 580mm  
Width: 210mm  
Height: 420mm  
FBOX406.3001 (BLACK)  
FBOX406.3002 (GREY)

Dimensions may vary by plus or minus 3% due to the rotational moulding process.  
For our full price list, go to [www.gough.com.au/price-list.htm](http://www.gough.com.au/price-list.htm). Prices may be subject to change without notice.

## The freedom to water your way!

Conserve Australia's most precious resource and help with your water needs.



Round Tanks			
Part Number	Litres	Dia	Height
FTAN.ST10000	10,000L	2.59m	2.28m
FTAN.ST07500	7,500L	2.25m	2.20m
FTAN.ST05500	5,500L	2.41m	1.52m
FTAN.TL05000	5,000L Tall	1.75m	2.35m
FTAN.ST05000	5,000L Short	2.05m	1.82m
FTAN.ST03000	3,000L	1.60m	1.85m

Round Tanks (Continued)			
Part Number	Litres	Dia	Height
FTAN.ST02500	2,500L	1.60m	1.52m
FTAN.ST02000	2,000L Tall	1.10m	2.48m
FTAN.ST01500	1,450L	1.25m	1.32m
FTAN.TL01000	1,000L Tall	0.90m	1.85m
FTAN.ST00600	600L	0.91m	1.27m



Slimline Tanks				
Part Number	Litres	Length	Width	Height
FTAN.SL05000	5,000L Slim	2.60m	1.26m	2.10m
FTAN.SLC05000	5,000L Slim Combo	4.50m	0.90m	1.85m
FTAN.SL03000	3,000L Slim	2.70m	0.85m	2.10m
FTAN.SL02000	2,000L Slim	1.65m	0.79m	2.15m
FTAN.ST01350	1,350L Slim	1.60m	0.75m	1.62m
FTAN.ST00375	375L Oval	1.19m	0.60m	0.79m

Dimensions may vary by plus or minus 3% due to the rotational moulding process. For our full price list, go to [www.gough.com.au/price-list.htm](http://www.gough.com.au/price-list.htm). Prices may be subject to change without notice.

## Plastic Welding and Fabrication

Our highly skilled team can design and manufacture products to suit your needs and also repair your existing products. Email your design sketch and we'll supply a quote. No job is too small or too large to consider.

- On-site repairs, welding and fabrication.
- Prototypes.



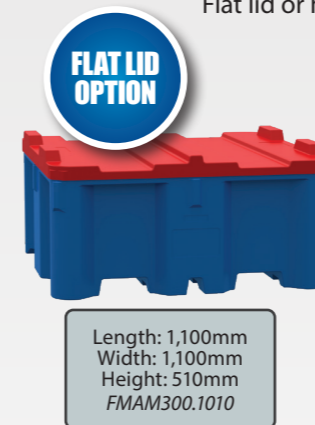
## Hoppers

- Chemical dispensers.
- Decant high specific gravity liquids.



## Parts Bin

Two-way forkliftable. Holds approximately 400L. Storage cube and pallet all-in-one! Weather-resistant. Lockable lid option. Flat lid or high cover option.



## Plastic Pallet

Four-way forkliftable. Tough and weather-resistant. Easy to clean and ideal for cold rooms and export.



## IBC/Pallet Cover

Cover your pallet or IBC with our durable and weather-resistant pallet cover.



Dimensions may vary by plus or minus 3% due to the rotational moulding process. For our full price list, go to [www.gough.com.au/price-list.htm](http://www.gough.com.au/price-list.htm). Prices may be subject to change without notice.

## Dunnage for the 21st Century

Cranefoot is a super heavy-duty, plastic dunnage which serves as an outrigger pad. It will not rot or splinter, has its own robust handle and is easy to store.

Designed for borer lifters, light cranes and EWPs, the Cranefoot is engineered to maximise load capacity whilst reducing weight, making the load easier to carry and equipment safer to use.



**Cranefoot 500**  
Length: 560mm  
Width: 500mm  
Height: 85mm  
Rated at 10 tonne  
FMAM400.1010



**Cranefoot 400**  
Length: 450mm  
Width: 390mm  
Height: 85mm  
Rated at 6 tonne  
FMAM400.1020



**Cranefoot 550**  
Length: 610mm  
Width: 550mm  
Height: 85mm  
Rated at 11 tonne  
FMAM400.1001



**Cranefoot 540HD**  
Length: 610mm  
Width: 540mm  
Height: 95mm  
Rated at 16 tonne  
FMAM400.1005



**DS420 Sleeper**  
Length: 420mm  
Width: 195mm  
Height: 100mm  
Rated at 5 tonne  
FMAM420.1001

## Revolutionary low-cost, light-weight, polyethylene conveyor belt cover

Beltcover is a unique conveyor belt cover system designed to withstand the harshest environments. It is the perfect cover for any application where stringent environmental regulations for noise, corrosion and dust control are in effect.

- The on-belt version promotes a healthier environment by containing dust and fibres and reducing air and noise pollution.
- The all-weather roof protects your product from the elements and protects the belt from UV degradation.
- Cyclone-proof, rated to Region D Cyclone Category 1 at an elevation of 30m above ground level.
- UV-stabilised Australian Standard AS1170.2 1989.
- Corrosion-proof.
- A moulded, hinged system allows for easy installation and removal for maintenance.
- Installation design assistance available.

