

# INTRODUCING VERTICAL SLIMLINE TANKS FOR WATER OR DIESEL



**OUR VERTICAL SLIMLINE TANKS ARE AVAILABLE IN TWO OPTIONS FOR BOTH WATER AND DIESEL, 55L WELLBODY TANKS AND 65L CANOPY TANKS.**

- ✓ Stylish, slimline design
- ✓ Option of UV-stabilised food grade polyethylene or UV stabilised diesel grade polyethylene
- ✓ Site tube level gauge
- ✓ 40mm lockable filler cap
- ✓ Brackets available or strap-in option
- ✓ Gravity feed or pump option
- ✓ Hose Kits for water or diesel available

**OUR PUMP OPTIONS ARE MORE CONVENIENT THAN CARRYING MULTIPLE JERRY CANS AND THEY ELIMINATE THE HEAVY LIFTING.**

### Submersible Water Pump Option

- Low Pressure - High Flow (approx. 12L/min).
- Suitable for transferring water, filling buckets, washing up tubs, washing hands and dirty feet, rinsing mountain bikes, paddle boards, vehicle etc.

### Submersible Diesel Pump Option

- High Flow (approx. 17L/min).
- Suitable for use as a long range fuel tank when heading into remote locations, towing vans and trailers to give you that extra fuel.
- Simply re-fuel your vehicle by inserting hose in the fuel filler. Only takes a few minutes to transfer.

### Diaphragm Water Pump Option

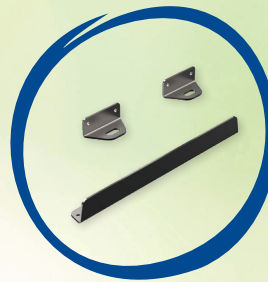
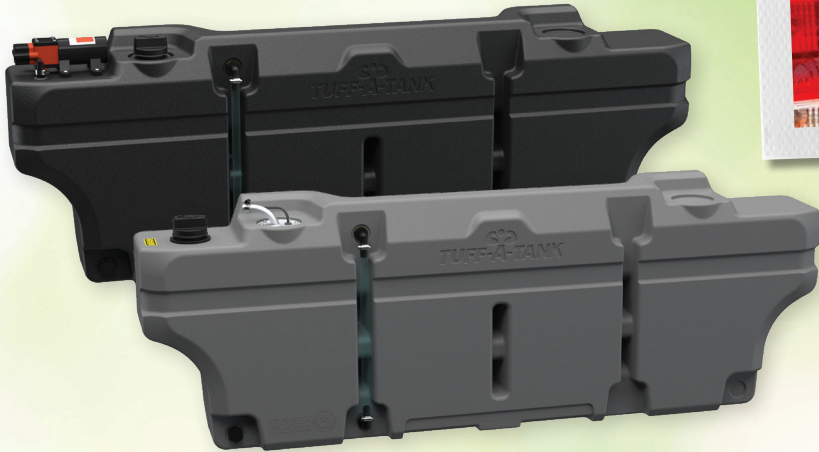
- High Pressure (40psi) - Low Flow (approx. 3.8L/min).
- Suitable for camp showers, washing hands and dirty feet, filling water bottles and washing up tubs etc.





## 55L WELLBODY TANKS

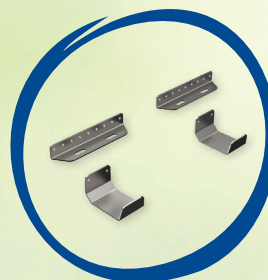
- ✓ Fits most dual cab utes below tonneau cover
- ✓ Fits in the gap between cargo drawers and the tub wall on dual cab. Great use of this wasted space.
- ✓ Fits wheel arches in dual cab tubs
- ✓ 1/2" brass BSP outlet
- ✓ 1295mm L x 175mm W x 445mm H



**55L Bracket Kit Available**  
Water Tank and Diesel Tank

## 65L CANOPY TANKS

- ✓ May be used for drop-side utes, open tray-backs or with canopy
- ✓ Uses minimal space under canopy
- ✓ 1/2" poly BSP outlet
- ✓ 1590mm L x 120mm W x 590mm H



**65L Bracket Kit Available**  
Water Tank and Diesel Tank

**GOUGH**  
**PLASTICS**

**FRECALL 1800 069 805**

P: (07) 4758 6400

F: (07) 4758 6499

833 Ingham Rd, Bohle, Townsville

sales@gough.com.au

www.gough.com.au

