

GOUGH PLASTICS

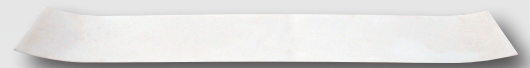
EXTRACTOR HOODS AND LINERS

*World first and leader in
the design and manufacture
of harvester extractor
hoods and liners*

- ✓ *Made with tough polyethylene*
- ✓ *Light-weight*
- ✓ *UV-stabilised*
- ✓ *Non-conductive*



1200 AND 1300 LINERS



▲ 1200/1300 STRIP LINER

FH00103.1307

Suits the 1200 or 1300 entry liner. Designed to protect and extend the life of the Entry Liner by protecting the high wear area, aiming for a full year of harvesting with one entry liner. This has been very successful since the 1997 harvesting season.



▲ 1300 ENTRY LINER STD

FH00102.1307.1

Suits the 1300 primary hood manufactured 1996 - 1997. This product has no seam lines. Where the exit liner would join, there is a piece cut out on either side at the bottom to allow the liner to fit into the primary hood.



▲ 1300 EXIT LINER STD

FH00102.1307

Suits the 1300 primary hood manufactured 1996 - 1997. Used with the 1300 entry liner standard.



▲ 1300 ENTRY LINER HD

FH00102.1307.2 (Natural)

FH00102.1307.5 (Black)

Made for the 1300 Conversion where the two liners are bolted together for a steel floor. Also available in black.



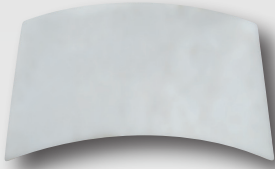
▲ 1300 EXIT LINER HD

FH00102.1307.4 (Natural)

FH00102.1307.6 (Black)

Made for the 1300 Conversion where the two liners are bolted together for a steel floor. Also available in black.

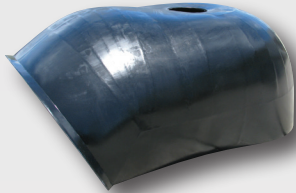
CAMECO AND AUSTOFT



▲ CAMECO CONE LINER

FH00103.9009

Measures 1500mm wide. Suits John Deere 3500 and 3510 models.



▲ CAMECO 5' PRIMARY HOOD

FH00103.9010

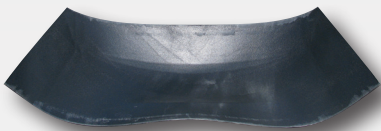
Measures 1500mm wide. Suits John Deere 3500 and 3510 models.



▲ CAMECO 5' ENTRY LINER

FH00102.1500

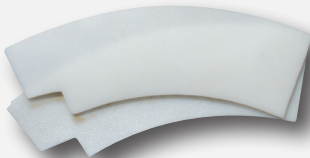
Measures 1500mm wide. Suits John Deere 3500 and 3510 models.



▲ CAMECO 5' EXIT LINER

FH00102.1505

Measures 1500mm wide. Suits John Deere 3500 and 3510 models.



▲ AUSTOFT CONE LINER

FH00103.9008

Suits Austoft 8010 and 8810 models.



*Proudly designed
and manufactured in
North Queensland
for tough Australian
conditions.*

GM900



▲ GM900 STRIP LINER

FH00103.9007

Suits the GM900 hood.
Extends hood life by protecting
the high wear area.



▲ GM900 SECONDARY HOOD

FH00100.9007 (Natural)

FH00100.9007.2 (Black)

Fitted standard to Austoft 97/98.
Supersedes the original and the
shell secondaries. Suitable for
all machines. Has the option of a
strip liner. Gives best directional
control and extraction.
Also available in black.

ACCESSORIES



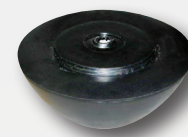
UPPER FAIRING

FH00100.0001



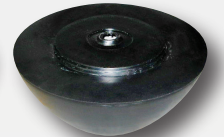
LOWER FAIRING

FH00100.0002



4' NOSE CONE

FH00100.0005



4' 6" NOSE CONE

FH00100.0006

HOOD LINER MATERIAL

4,750mm wide x 600mm high

FH00103.1560

2,365mm wide x 600mm high

FH00103.15600H

GOUGH
PLASTICS

CONTACT YOUR LOCAL AGENT

Freecall: 1800 069 805

Phone: (07) 4758 6400

833 Ingham Rd, Bohle, Townsville

sales@gough.com.au

www.gough.com.au

