

# DOMESTIC CATALOGUE

JULY 2015  
(including prices)



## THE FREEDOM TO WATER YOUR WAY



Conserve Australia's most precious resource  
and help with your water needs.



Caring for the planet  
and its people with a passion



# Locally Manufactured



10,000L



7,500L



5,500L



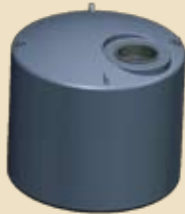
5,000L Tall



5,000L Short



3,000L



2,500L



2,000L Tall



1,450L



1,000L



600L

Round Tanks				
PART NUMBER	LITRES	DIA	HEIGHT	PRICE*
FTAN.ST10000BLK	10,000L	2.59m	2.28m	\$1,728.00
FTAN.ST07500BLK	7,500L	2.25m	2.20m	\$1,418.00
FTAN.ST05500BLK	5,500L	2.44m	1.36m	\$1,111.00
FTAN.TL05000BLK	5,000L Tall	1.75m	2.35m	\$976.00
FTAN.STS5000BLK	5,000L Short	2.05m	1.82m	\$976.00
FTAN.ST03000BLK	3,000L	1.60m	1.85m	\$886.00
FTAN.ST02500BLK	2,500L	1.60m	1.52m	\$741.00
FTAN.ST02000BLK	2,000L Tall	1.10m	2.48m	\$797.00
FTAN.ST01500BLK	1,450L	1.25m	1.32m	\$606.00
FTAN.TL01000BLK	1,000L Tall	0.90m	1.85m	\$527.00
FTAN.ST00600BLK	600L	0.82m	1.26m	\$449.00

All tanks made from food grade polyethylene - no taste, no smell. Dimensions may vary by plus or minus 3% due to the rotational moulding process.  
 \*All prices are inc GST, ex -TSV Factory (do not include delivery). Prices may be subject to change without notice.

# Gough Water Tanks



5,000L Slim



5,000L Slim Combo



3,000L Slim



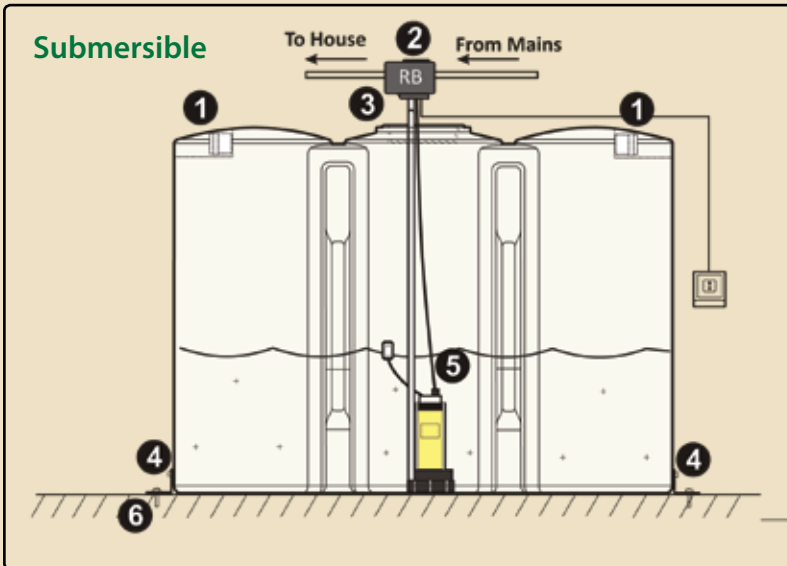
1,350L Slim



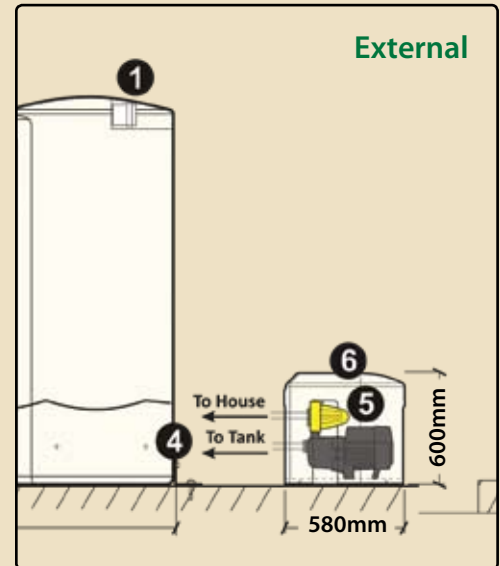
375L

## Slimline Tanks

PART NUMBER	LITRES	LENGTH	WIDTH	HEIGHT	PRICE*
FTAN.SL05000BLK	5,000L Slim	2.60m	1.26m	2.10m	\$1,785.00
FTAN.SLC05000BLK	5,000L Slim Combo	4.50m	0.90m	1.85m	\$2,816.00
FTAN.SL03000BLK	3,000L Slim	2.70m	0.85m	2.10m	\$1,225.00
FTAN.ST01350BLK	1,350L Slim	1.60m	0.75m	1.62m	\$909.00
FTAN.ST00375BLK	375L Oval	1.19m	0.60m	0.79m	\$348.00



OR



### Stainless Steel Braided Hose

Interconnects base of cylinders at the rear of the tank (1" diameter).



**Optional:** Concrete hold downs (x4).  
Certified to AS1170.2 Region C - available on request.

All tanks made from food grade polyethylene - no taste, no smell. Dimensions may vary by plus or minus 3% due to the rotational moulding process.  
\*All prices are inc GST, ex -TSV Factory (do not include delivery). Prices may be subject to change without notice.



**Quality Davey and Silver Series® Pump Offers**

- 2 Year Warranty
- Factory Backed
- Smooth Running
- 200 - 300kpa

**PolySlab Pump Cover**

- Strong, lightweight, recycled
- Designed in consultation with Australian and International pump manufacturers

BWAT0001 \$90.00\*



**For Larger Homes**

Silver Series® SJ60-08PC

- Australian assembled
- Approx. 60lpm
- Other options available

PARTAC1206 \$730.00\*



**For Medium Homes**

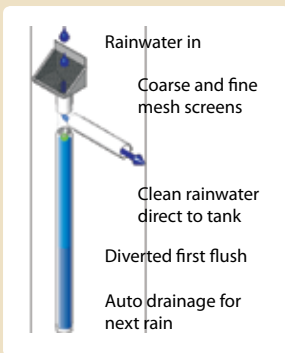
Silver Series® SJ35-04PC

- Australian assembled
- 30 - 40lpm
- Other options available

PARTAC1205 \$393.00\*



**First Flush Water Diverter and Leaf Eater**



Water Diverter  
PARTAC0090  
\$45.00\*

Leaf Eater  
PARTAC0091  
\$56.00\*

**Leaf Strainer and Light Guard**

- No mosquitoes or leaves in your tank
- No sun means no algae
- Stainless steel mesh

PARTAC0654 \$26.40\*



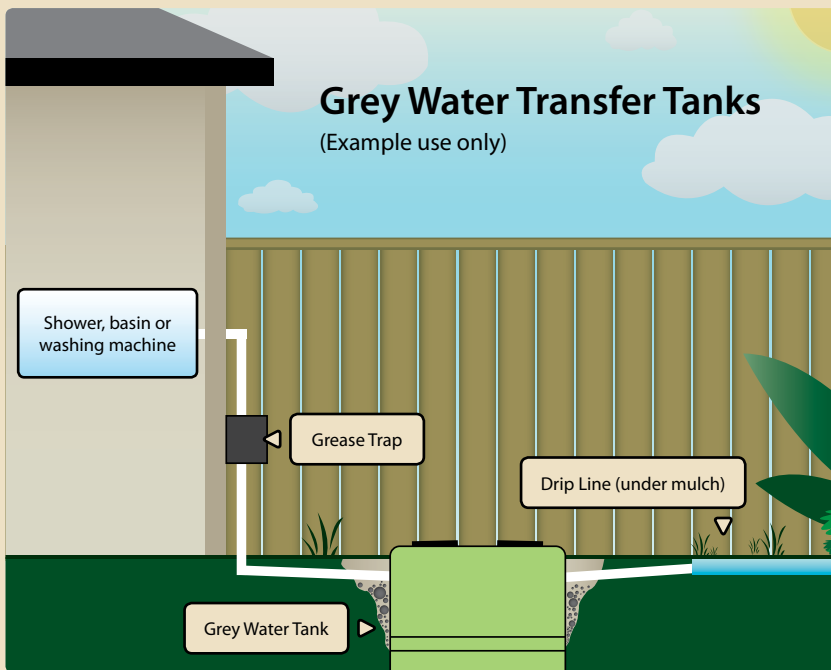
**Connection Kits**

- 2" Kit standard on all 10,000L tanks.
- Kit consists of flexi hose, s/s valve, hose clamps and thread tape.
- 1" Kit is an optional extra on all other tanks.

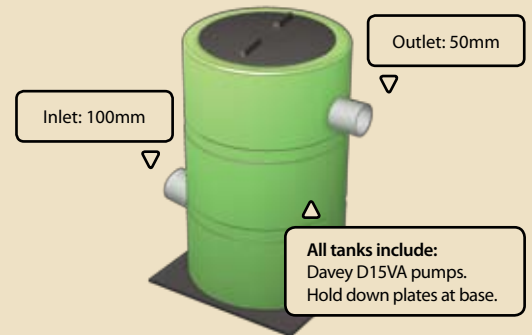


1" Outlet Kit  
FTAN204.0059 \$45.00\*

2" Outlet Kit  
FTAN204.0058 \$79.00\*



**Grey Water Transfer Tanks**  
(Example use only)



**600L Tank**

Diameter: 815mm Height: 1315

- 50mm outlet standard at 940mm from base (customisable)
- 100mm inlet standard at 400mm from base (customisable)

FENV900.0100 \$1694.00\*

**200L Tank**

Diameter: 560mm Height: 900mm

- 50mm outlet standard at 850mm from base (customisable)
- 100mm inlet standard at 400mm from base (customisable)

FENV900.0200 \$1403.00\*

\*All prices are inc GST, ex -TSV Factory (do not include delivery). Prices may be subject to change without notice.



Caring for the planet and its people with a passion

For more information about these great products:

CALL 1800 069 805

833 Ingham Rd, Bohle TOWNSVILLE

Ph: (07) 4758 6400

Fax: (07) 4774 7608

sales@gough.com.au

www.gough.com.au



ARMA Member