

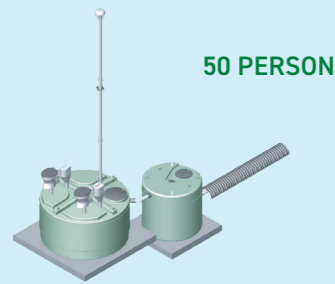


GOUGH PLASTICS

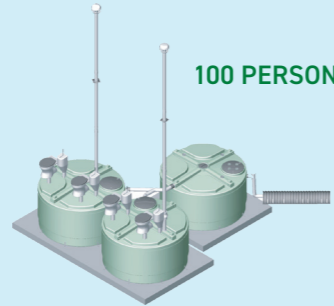
THE ENVIRONMENTALLY FRIENDLY SOLUTION



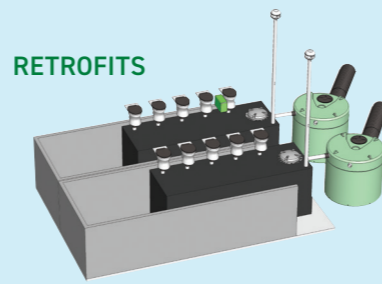
ENVIRO CATALOGUE



50 PERSON



100 PERSON



RETROFITS

How does it work?

The waste enters the primary tank, which is filled with water, where it is acted upon by bacteria and broken down to 5% of its original mass. Via displacement, the clarified effluent then travels to the secondary treatment unit.

On completion of treatment (approximately 120 days), the effluent is then dispersed to ground via a gravel bed, or to other options.

Benefits

- The MicroFlush pedestal uses only 300ml of water per flushing operation.
- The NonFlush pedestal uses no water at all.
- Delivers extremely high quality effluent.
- Is capable of coping with over 100% overload situations (max 1 week).
- Can be installed in existing or new buildings that are not able to be connected to a sewer system.

Retrofits

- Custom-made to suit your current structure.
- Designed to extend the life of your existing building.
- Designed to replace your old overloaded on-site waste system.
- Upgrade to a MicroFlush or NonFlush Hybrid Toilet System with your current building.
- All the benefits of the Hybrid Toilet System without the cost of a new building.

Maintenance

The primary tank should only require sludge pump-out every 4 to 6 years, dependent upon usage. No need for chemicals, only water or Nu-Klean needs to be used to clean the pedestal. BioMagic can be added to the primary tank to inoculate the system.

The Hybrid Toilet System is covered by a full manufacturer's warranty.

The Hybrid Toilet System must be installed in accordance with the appropriate Australian Standards and local regulations. Please seek guidance from your local regulatory body.

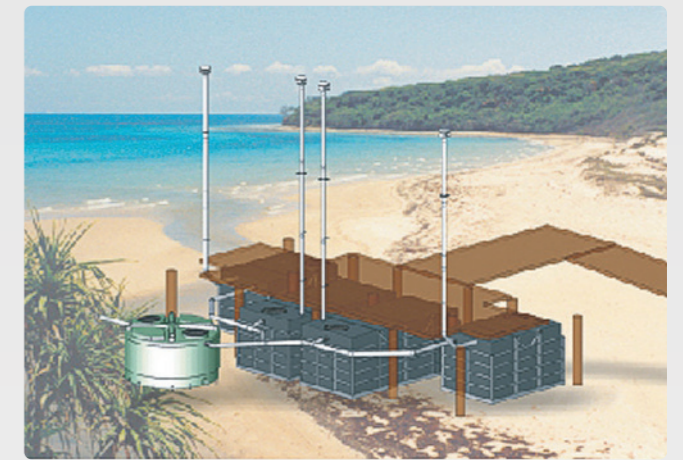


Custom-built systems for existing structures and site-specific needs



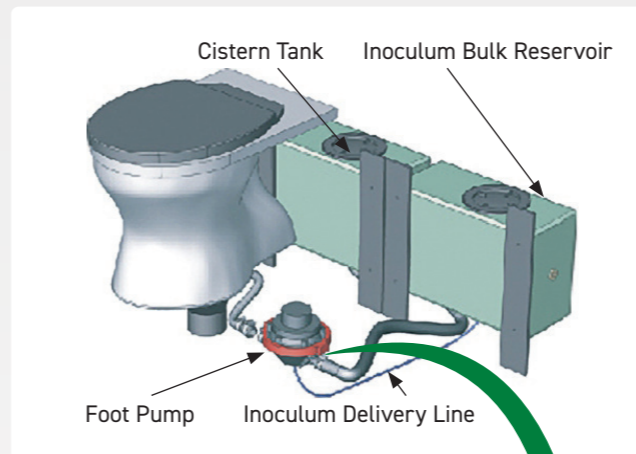
Anti-vandal Hand Pumps

- Improved handle and housing design prevents damage to pump.
- Heavy-duty wall mounting.
- Easy pump access for service.



Custom System Design

- Designed to replace your old overloaded system.
- Designed to extend the life of your existing building.
- Custom-made to suit your current structure.
- Upgrade to MicroFlush or NonFlush.
- All the benefits of the Hybrid Toilet System without the cost of a new building.



Auto Inoculation Unit

- The bulk reservoir removes the requirement for frequent manual inoculation.
- Matches inoculation relative to usage rate.
- Assists odour control.
- Improves waste digestion.
- Fits all MicroFlush systems.



Custom-made Tanks

Please contact your agent for a detailed inquiry form. To quote for a custom-made tank, we require:

- Usage numbers.
- Under building dimensions.
- Photographs of site, building and under-floor work area.



To protect your investment, ask us for more details on site-based maintenance programs and trained Hybrid Toilet System technicians.

GOUGH PLASTICS
SAFARI SYSTEMS



Safari

The Safari is a very simple, cost-effective unit that marries the Hybrid Toilet System (HTS) to a purpose-built building. The Safari has an attractive design, heavy-duty construction, kit format with easy assembly and comprehensive instructions.

There are two sizes of HTS units available that match the Safari kit. These are the 6 Person and the 10 Person units.

The Hybrid Vault Safari

The building is also available as a 1,000L Vault Safari kit. This is a pump-out option which is capable of being upgraded to a 10 Person unit.

Safari Side-shifter

The Safari Side-shifter unit is a clever little toilet system. The two waste tanks sit in a base frame and the building sits on top.

When the first tank is full, the building and pedestal can simply be rolled across to sit above the second tank. The first tank can then be airlifted away and emptied at a convenient time.

When the second tank is full, the first tank can be airlifted back to the Side-shifter and the second tank can be taken away to be emptied. Each time, the building is simply rolled (the frame is on bearings) to the opposite end of the base frame to allow clear access to the full tank.



An option is available to separate solid waste from liquid waste. Please contact our sales team for more information.

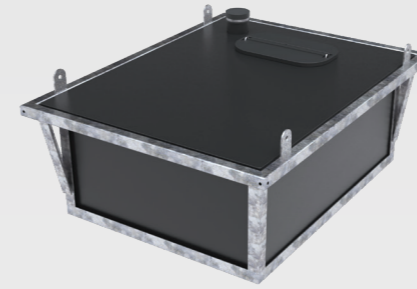
Common Applications

This product has a multitude of applications for lower volume use:

- ✓ Walking tracks and trails, lookouts and boardwalks
- ✓ Government Rail toilet facilities
- ✓ Dump sites and waste-transfer stations
- ✓ Gate houses and security posts
- ✓ Islands, remote fishing and camping areas
- ✓ Rural fire brigade stations
- ✓ Rural residential applications
- ✓ Small country churches and community halls, out-stations and homeland sites
- ✓ Geo camps, Mining and Telecommunications sites
- ✓ Wheat silos
- ✓ Golf courses

GOUGH PLASTICS
FLY-OUT SEWAGE PODS

Gough Plastics offer a range of solutions for Fly-out Sewage from remote sites, either from huts and cabins or from stand-alone toilet blocks.



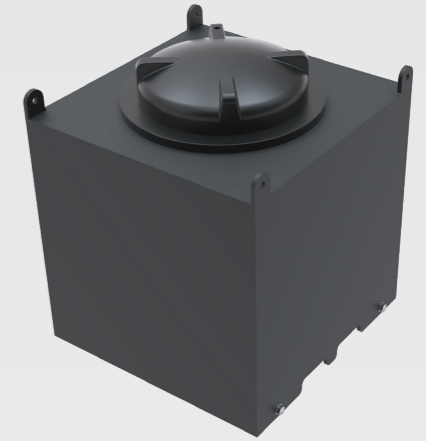
Safari Side-shifter Fly-out Pod

This pod is designed to suit the Safari Side-shifter building. This model comes in two sizes, 380L and 600L. The pod is made of HDPE with a galvanised steel frame for lifting.



Moulded Fly-out Pod

Our 640L Moulded Fly-out Pod is perfect for remote sites with no vehicle access. It can be easily pushed under the building and, thanks to the steel frame, it can be safely flown in and out when full.



Fabricated Fly-out Pod

A Fabricated Fly-out Pod is a custom-made product that can be modified to suit customer requirements. Size and volume can be adjusted to suit building and helicopter lifting capacity. The Fly-out Pod has four wheels to allow the pod to slide in and out of the building and four engineered lifting lugs for the fly in and out operation.



For more information on our Fly-out Sewage Pods, please contact our helpful sales team.

GOUGH PLASTICS
BIOMAGIC

Super 500

BioMagic treats the cause instead of the symptom. It is a practical and economical way of supplying oxygen and nutrients in a hydrated form, which allows the facultative bacteria to quickly become and remain aerobic, effectively eliminating sulfide production and actually preventing odours from being produced.

For neutralising biomass, BioMagic acts the same as Mother Nature's bio-cycle, only hyper-accelerated. It is non-hazardous, non-volatile, pH neutral, long lasting and 100% biodegradable and environmentally sustainable. Available in sizes 5L, 10L, 20L, 200L and 1,200L.

Nu-Klean

BioMagic's Nu-Klean is a fully concentrated, multi-purpose cleaner that can be used on all washable surfaces. It is 100% environmentally sustainable and can be easily diluted for a large range of applications.

Nu-Klean is very effective and leaves no residue. It does not bleach or damage surfaces. It is especially formulated for use on modern plastic, Perspex and fibreglass.



Gough Plastics recommend and sell BioMagic. These products are also available directly from BioMagic. 1800 888 205 | biomagic.com.au

NonFlush Pedestal

After years of observation and in-field testing, we have designed a superior, more functional pedestal with the following features:

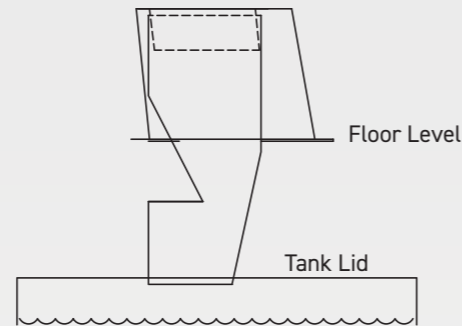
- Absolute minimum surface contact area which greatly reduces soiling.
- A more appealing bowl shape which provides more than sufficient room to avoid contact with the bowl surface.
- A hole size which allows only smaller objects to pass through and provides a practical balance between safety, aesthetics and function.



The Dropper Tube

The Dropper Tube is an integral component of the system and performs a number of functions:

- Directs waste into the primary tank.
- Isolates waste from any possible contact.
- Requires no maintenance and limited cleaning.
- Forms the first part of the ventilation system.
- The recess in the front of the tube and the bottom flap both act as an anti-splash device and aid in the overall aesthetics. They provide a dark tube which limits light entry into the primary tank and also blocks the view of the waste below.



MicroFlush Pedestal

The MicroFlush pedestal was developed to emulate the standard domestic, white, ceramic toilet.

There are two models available:

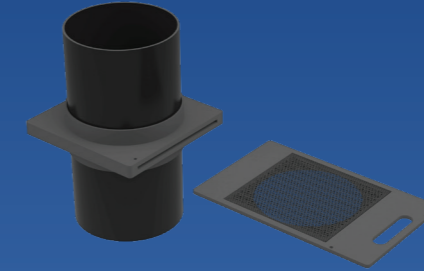
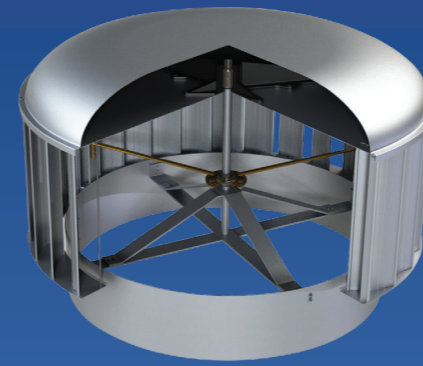
- MicroFlush with Hand Pump
- MicroFlush with Foot Pump

The special bowl has been designed to flush clean using only 300ml of water, opposed to 6 litres for a full flush on a standard toilet. Combining this flush technology with the Hybrid Toilet System has brought a new level of toilet cleanliness and user familiarity to on-site treatment and minimal water use.

The closure mechanism of the MicroFlush bowl gives a clean visual break from the waste in the system as well as an insect and odour barrier. The narrow through-point of the bowl ensures child safety and minimisation of the introduction of non-toilet waste.



Gough Plastics is continuing to develop and test new models of toilet pedestals for use in Australia and other countries.



Hurricane Ventilator

- Wind-powered; suitable for high wind speed
- Made of aluminium
- Low maintenance
- No rust
- One year warranty
- Available in a range of powder-coated colours upon request

Mozzie Blocka

- Designed to stop mosquitos flying into the primary tank from the vent system
- Suits a 300mm poly pipe
- Slides off the housing easily for cleaning
- One year warranty
- Available in black only

Rule In-line Fan

- Ground level installation; great for WH&S
- Kit includes 2 x Fernco couplings for easy installation and removal
- Fans are available in both 12 and 24 volt
- Power consumption is 4 AMP when the flow rate is 235 CFM at open flow
- Includes low voltage cut-off switch and a timer so fans operate only during peak times
- With a vent cowl at the top, it is an effective, efficient solution



Setting the standard in user-friendly dump points

The first stop for all portapotties!

The Dump-Ezy dump point is the entry point for all grey-water portapotty and mobile toilet waste entering the waste treatment system. It is designed to be easily identifiable, attractive and user-friendly, with simple to follow instructions.

This easy to install, innovative product includes built-in simple and effective operational signage. The lid is lockable and strong yet light-weight and includes a moulded-in handle and a rubber seal.

Dump-Ezy is manufactured from tough, UV-stabilised, non-corroding polyethylene. It can be installed on top of a floor or cast into a concrete slab. The unit allows for direct discharge to sewer and/or to a holding tank.



Photo courtesy of Coral Coast Tourist Park

Site Location

When selecting a site to install the Dump-Ezy, consideration should be given to traffic in and around the area. Dump-Ezy should be installed away from high traffic areas to ensure user safety. Consideration should be given to any nearby features such as toilet blocks, tables, play grounds etc. Side access roads and isolated pull-over bays are ideal.

Physical barriers, such as curbing and railings, should be positioned in a way that still allow clear access for persons and hoses/cartridges.

Registered Design No. 153860

Common Applications

Applications include, but are not limited to:

- ✓ Council sites
- ✓ National parks
- ✓ Caravan parks
- ✓ Roadside stops
- ✓ Marinas
- ✓ Showgrounds
- ✓ Beach Carparks



The first step in easy waste management!

Dump-Ezy has evolved from a need to provide a mechanism for dealing with waste from portable toilets in mobile homes and boats as people travel around.

Options

In its simple form, the unit allows for direct discharge to sewer. There are bolt-on options for pre-treatment of the portable toilet chemicals. This can be done by capturing and inoculating the waste in a holding or septic tank prior to entry into an on-site system or council sewage stream.

Hose Wash Down

A tap and hose should be provided next to installations to enable wash down with each use. This ensures a clean unit is maintained.

Drainage

Adequate drainage should be provided around the Dump-Ezy to prevent infiltration from heavy rainfall, runoff etc.

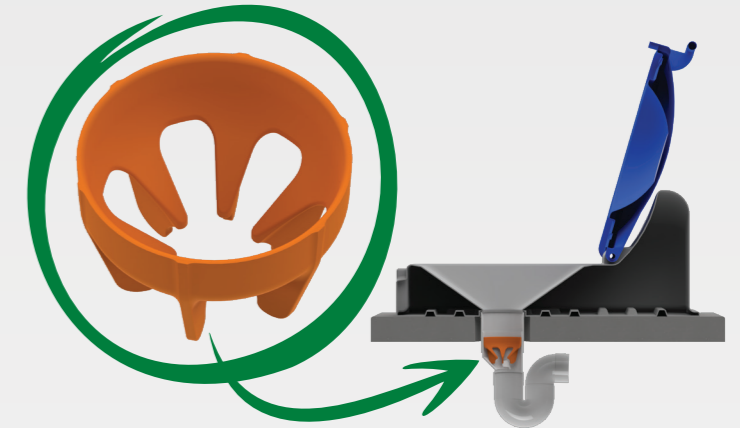
Dump-Ezy Signage

Adequate signage should be installed to make people visibly aware of the Dump-Ezy.

Dump-Ezy signage is available from shop.gough.com.au.

3,000L Holding Tank Option

Comes pre-plumbed direct to holding tank for immediate installation.



Rubbish Blocka Option

As the name suggests, the Rubbish Blocka is designed to prevent blockage by stopping unwanted items falling into the sewer pipe.

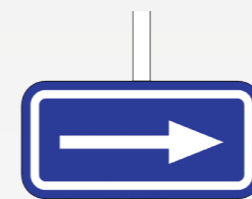


Please note, the Dump-Ezy unit is not a treatment system. It is only the front end of a process and needs to be installed in front of an appropriate holding tank, septic tank or sewer line.



WaterMark
SAI Global
ATS5200.482
Certificate Number WMKT21102

Photo courtesy of Kev Collins



Dump-Ezy Sign
Arrow Only
PAREZY0024



Dump-Ezy Sign
RHS Arrow
PAREZY0023



Dump-Ezy Sign
LHS Arrow
PAREZY0023.1



Dump-Ezy Sign
300mm x 500mm
PAREZY0026



Dump-Ezy Sign
690mm x 690mm
PAREZY0025



Common Applications

GEOHEX™ can be used for soil, turf, embankment and road stabilisation in or around:

- ✓ Mining
- ✓ Residential developments
- ✓ Landscape engineering
- ✓ Civil projects
- ✓ Road works
- ✓ Tank farms
- ✓ Sports grounds
- ✓ Council landfills
- ✓ Footpaths
- ✓ Marine parks
- ✓ Sheds and warehouses
- ✓ Factories and manufacturing centres
- ✓ Industrial estates
- ✓ Driveways
- ✓ Bush areas
- ✓ Golf courses
- ✓ Hospitals
- ✓ Playgrounds and bike tracks
- ✓ Parking areas
- ✓ Caravan parks

GEOHEX™ Erosion Control System

The GEOHEX™ Erosion Control System is unique and innovative soil stabilisation technology that helps mitigate erosion and manage water runoff.

Environmentally friendly, easy to install and long-lasting, GEOHEX™ has been proven to be more cost-effective than concrete and other bitumen-type products.

GEOHEX™ is manufactured from high impact-resistant, fully recycled and recyclable, co-polymer polypropylene.



Dimensions may vary by plus or minus 3% due to the rotational moulding process.

Modular, interlinking panel system designed for walking trails

- Available in 100% Recycled (Black), Virgin (Birch Grey) or can be colour matched to suit site.
- Made from UV-stabilised, non-corroding polypropylene.
- Light-weight, unidirectional and barefoot-friendly.
- Armours trails to minimise erosion.
- Preserves natural settings.

The TrailPad panel system is installed just under the ground surface providing a firm underfoot feeling and maximum grip without the visual impact of a fully exposed track product. The product can be colour matched to the natural surrounds.

A critical feature is that in combination with the holes, the grip lugs trap and retain material on the top surface ensuring the product remains covered, reducing dramatically the visual impact on the environment.

The interconnected panel system delivers exceptional strength yet allows sufficient flexibility to follow the natural terrain. The hexagonal design allows for almost infinite directional changes so the track can follow the natural flow of the land. Panels can be cut with either hand or power tools for neat fitting around natural features and edge filling if required.

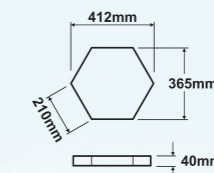


Before Installation



During Installation

Coverage: 8.62 panels/m²
Tread Depth: 3mm
Weight: 1kg



Please note, TrailPad is designed for pedestrian use only and not intended for vehicular traffic.



After Installation

Ground stabilisation traction system designed for vehicular traffic

- Made from a blend of Virgin and Recycled, UV-stabilised, non-corroding polyethylene.
- Promotes root growth and minimises erosion.
- Supports small vehicles to heavily laden trucks and buses whilst protecting the environment.
- Can be pre-assembled in factory for easy and rapid on-site installation.

The TrackPad is a modular roadway system that supports vehicular traffic in difficult to access, easily damaged, fragile terrain. The primary purpose is to provide vehicle access whilst protecting the natural environment. Other applications are limited only by your imagination.

TrackPad can be pre-assembled in factory for rapid on-site installation. Once positioned, it is virtually out of sight and immediately operational. It is designed around current WH&S manual handling requirements, allowing for significant reduction in machinery costs.

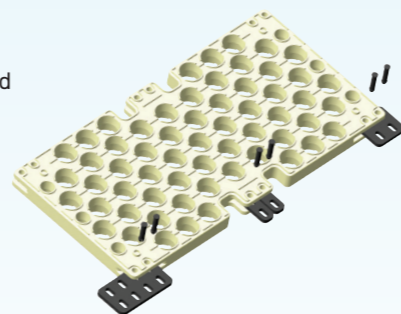
The panels are manufactured from a blend of Virgin and Recycled, tough UV-stabilised, non-corroding polyethylene. Panels, connector plates and the locking pins are all plastic, insuring a corrosion-free system.

Once the site is levelled, simply lay geo-fabric and the panels into position by hand and interconnect using the screw pins and linking plates. The panels are backfilled, locking the entire matrix into position and ready for use.

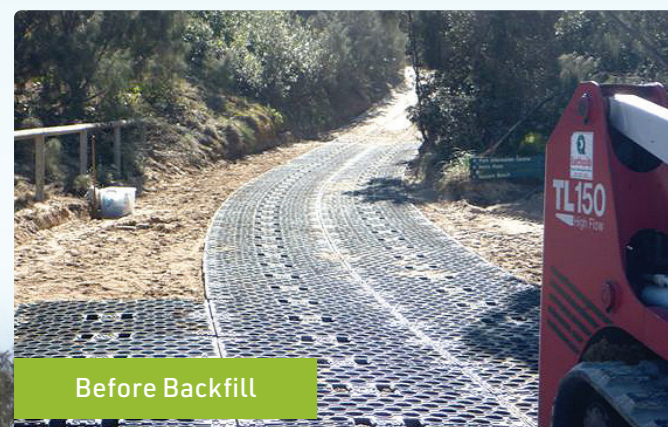
Heavy-duty TrackPad

75% Virgin, 25% Recycled
Injection Moulded Pins
HDPE Joiner Plates

Length: 1,650mm
Width: 817mm
Depth: 103mm
Weight: 25kg



During Installation



Before Backfill



Standard and heavy-duty applications are available. Please consult Gough Plastics for a recommendation on the appropriate specification level for the application.



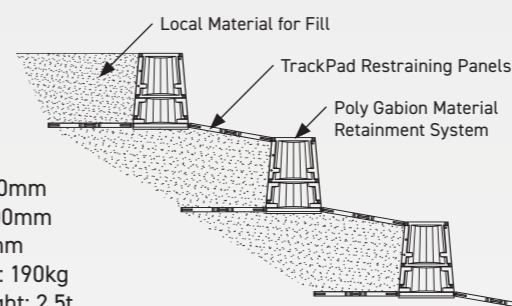
After Installation
Harpers Hill
Moreton Island



400m River Crossing

Ground stabilisation traction system designed to cross barriers with ease

- Installation is speedy and efficient, e.g. 11m per day for a two lane river crossing.
- Decreased labour requirements for men and plant.
- Ability to use local materials to fill the Gabion. No carting of rock over long distances.
- Optional use of recycled material.
- Use in conjunction with TrackPad, concrete culverts, headstocks and other road surfaces.



Poly Gabion

Height: 1,500mm
Length: 2,500mm
Width: 950mm
Tare Weight: 190kg
Ballast Weight: 2.5t



180m River Crossing



During Installation



During Installation

Dimensions may vary by plus or minus 3% due to the rotational moulding process.

GOUGH PLASTICS
VEHICLE AND RECREATION



- Suitable for most traybacks and trailers with easy-fit brackets
- Won't chip or dent



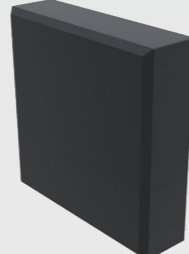
20L Rectangular Water Tank
Length: 300mm
Width: 200mm
Height: 480mm
FBOX408.0200



60L Rectangular Water Tank
Length: 350mm
Width: 350mm
Height: 550mm
FBOX408.0600



100L Rectangular Water Tank
Length: 350mm
Width: 350mm
Height: 940mm
FBOX408.1000



600L Rectangular Water Tank
Length: 1240mm
Width: 380mm
Height: 1240mm
FMAM300.0600



15L Handwash Water Tank
Length: 360mm
Width: 260mm
Height: 330mm
FBOX401.1500



24L Underbody Water Tank
Length: 425mm
Width: 205mm
Height: 309mm
FBOX401.2500



25L Handwash Water Tank
Length: 580mm
Width: 210mm
Height: 420mm
FBOX401.2550



30L Underbody Water Tank
Length: 580mm
Width: 210mm
Height: 420mm
FBOX401.3001 (BLACK)
FBOX401.3002 (GREY)

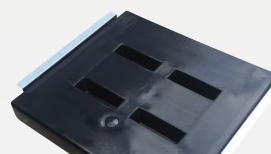


40L Underbody Water Tank
Length: 530mm
Width: 260mm
Height: 410mm
FBOX401.4001



70L Truck Handwash Water Tank
Length: 585mm
Width: 385mm
Height: 395mm
FBOX404.7000

GOUGH PLASTICS
UNDERBODY SLIMLINE TANKS



50L Water
Length: 750mm
Width: 810mm
Depth: 167mm
FBOX405.8050



70L Water
Length: 1,080mm
Width: 810mm
Depth: 168mm
FBOX405.8000



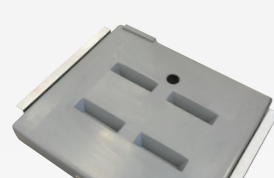
80L Water
Length: 1,180mm
Width: 810mm
Depth: 167mm
FBOX405.8080



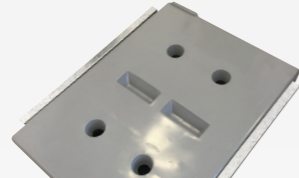
100L Water
Length: 1,440mm
Width: 810mm
Depth: 167mm
FBOX405.8100



Slimline Water Hose Kit
FBOX405.8001



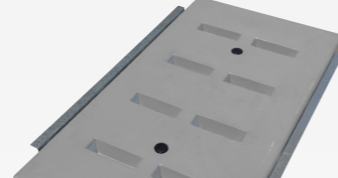
50L Diesel
Length: 750mm
Width: 810mm
Depth: 167mm
FBOX405.8050.3



70L Diesel
Length: 1,080mm
Width: 810mm
Depth: 168mm
FBOX405.8000.3



80L Diesel
Length: 1,180mm
Width: 810mm
Depth: 167mm
FBOX405.8080.3



100L Diesel
Length: 1,440mm
Width: 810mm
Depth: 167mm
FBOX405.8100.3

Dimensions may vary by plus or minus 3% due to the rotational moulding process.

GOUGH PLASTICS
VEHICLE AND RECREATION



- Holds ropes, straps, jack, gloves and recovery gear
- Easy-fit brackets



24L Underbody Toolbox
Length: 425mm
Width: 205mm
Height: 309mm
FBOX406.2400



40L Underbody Toolbox
Length: 530mm
Width: 275mm
Height: 410mm
FBOX406.4000



30L Underbody Toolbox
Length: 580mm
Width: 210mm
Height: 420mm
FBOX406.3001 (BLACK)
FBOX406.3002 (GREY)

T900 Highline
Length: 900mm
Width: 550mm
Height: 550mm
FBOX804.9000H



T900 Lowline
Length: 900mm
Width: 550mm
Height: 410mm
FBOX804.9000L

T1200 Lowline
Length: 1200mm
Width: 550mm
Height: 410mm
FBOX804.1200L

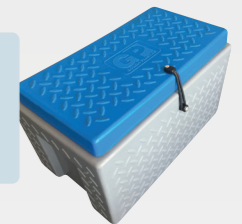
T450
Length: 450mm
Width: 450mm
Height: 450mm
FBOX802.6400

T1200 Highline
Length: 1200mm
Width: 550mm
Height: 550mm
FBOX804.1200H

Cabin Box



C1500 Cabin Box
Length: 1500mm
Width: 350mm
Height: 350mm
FBOX804.0175



C500 Cabin Box
Length: 500mm
Width: 312mm
Height: 315mm
FBOX804.0177

- Lockable catches and hinged lid
- Various colours available
- Moulded and riveted handles
- UV-stabilised polyethylene
- Tough, durable and stackable
- Add a mould-on company logo

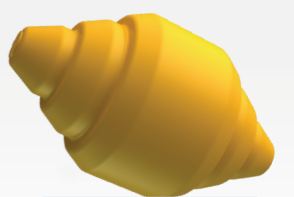
- Interior storage for vehicle cabins
- Ideal for stowing gear behind seats

GOUGH PLASTICS
MARINE PARK MOORING BUOYS

Our buoys are made in bright colours with mould-on identification graphics so they are easily visible in the water. The Standard Buoy has galvanised shackles. The fender helps to prevent damage to boats, vessels and berthing structures. An Ultra High Molecular Weight Polyethylene (UHMWPE) sheet is used for its superior performance in this application. UHMWPE has excellent impact strength, resistance to chemicals and abrasion, plus great durability to last through the toughest conditions.



Standard Buoy
Diameter: 600mm
Height: 800mm
Volume: 70L
FENV800.0001



Honey Bee Buoy
Diameter: 550mm
Height: 950mm
Volume: 110L
FENV800.0006



Our versatile buoys are used for public moorings in marine parks throughout Queensland and NSW.

GREY WATER TRANSFER TANKS

200L Grey Water Transfer Tank

- Diameter: 560mm
Height: 900mm
- 50mm outlet standard at 850mm from base (customisable)
- 100mm inlet standard at 400mm from base (customisable)

FENV900.0200



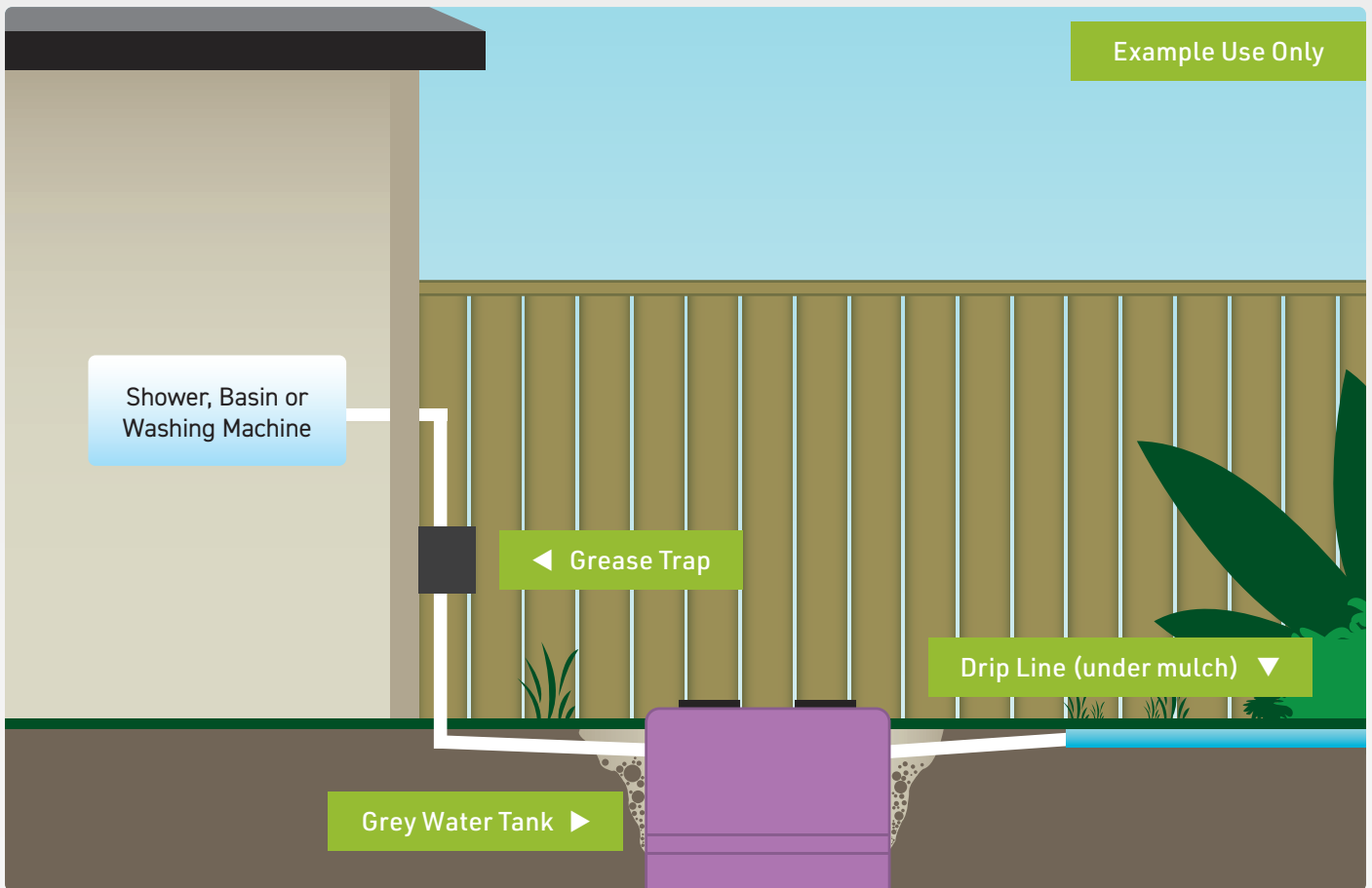
600L Grey Water Transfer Tank

- Diameter: 815mm
Height: 1315mm
- 50mm outlet standard at 940mm from base (customisable)
- 100mm inlet standard at 400mm from base (customisable)

FENV900.0100



All Grey Water Tanks include Davey D15VA pump hold down plates at base. Gough Plastics Grey Water Tanks must be installed by a licensed plumber.



Dimensions may vary by plus or minus 3% due to the rotational moulding process.