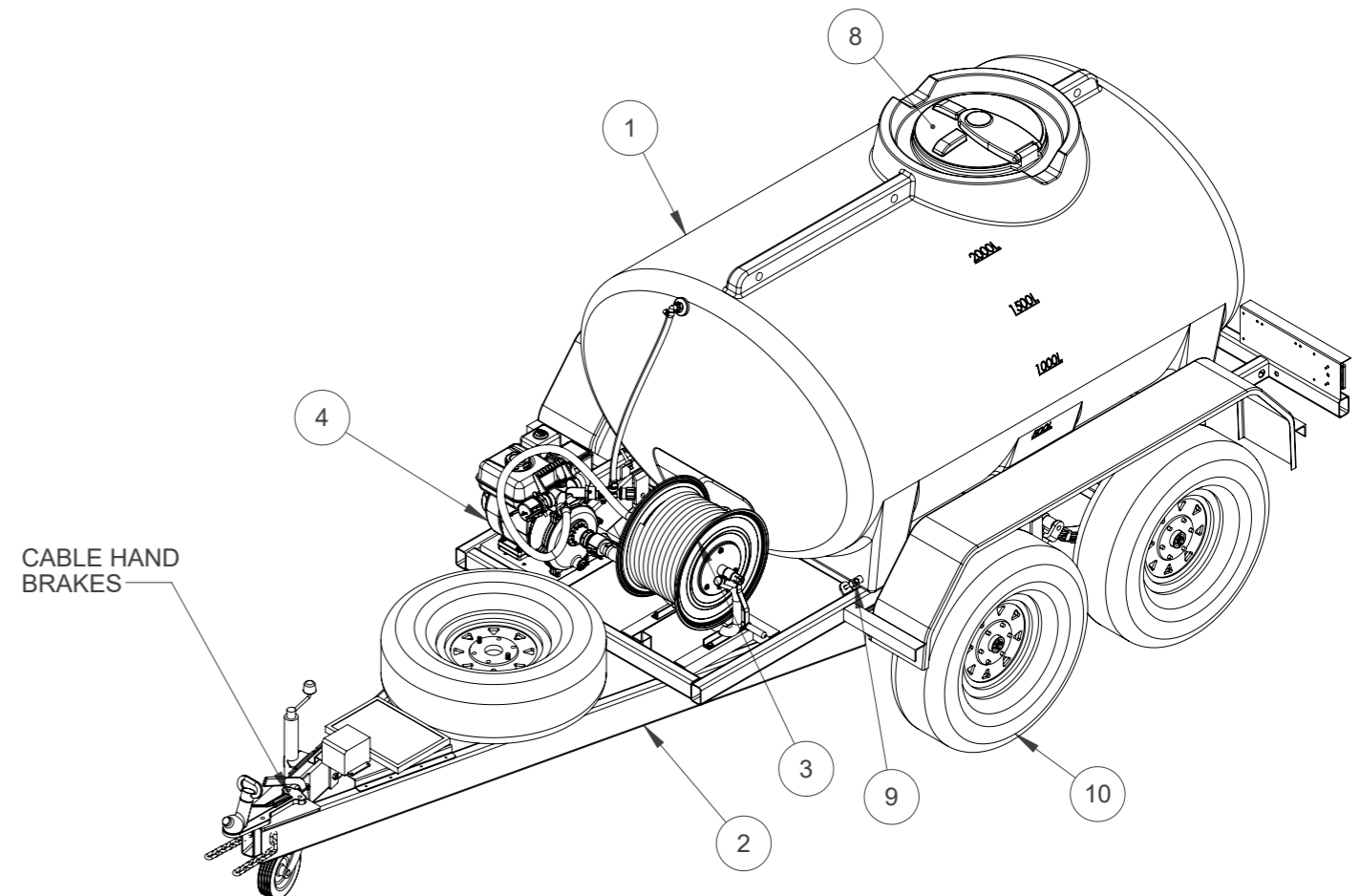
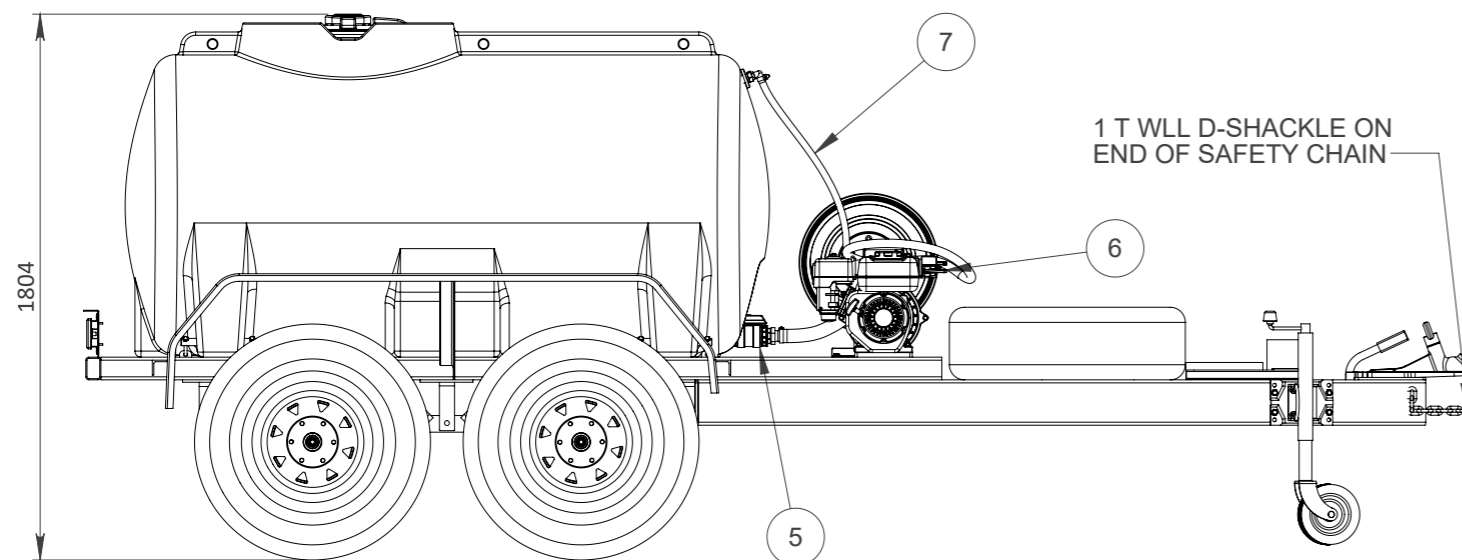
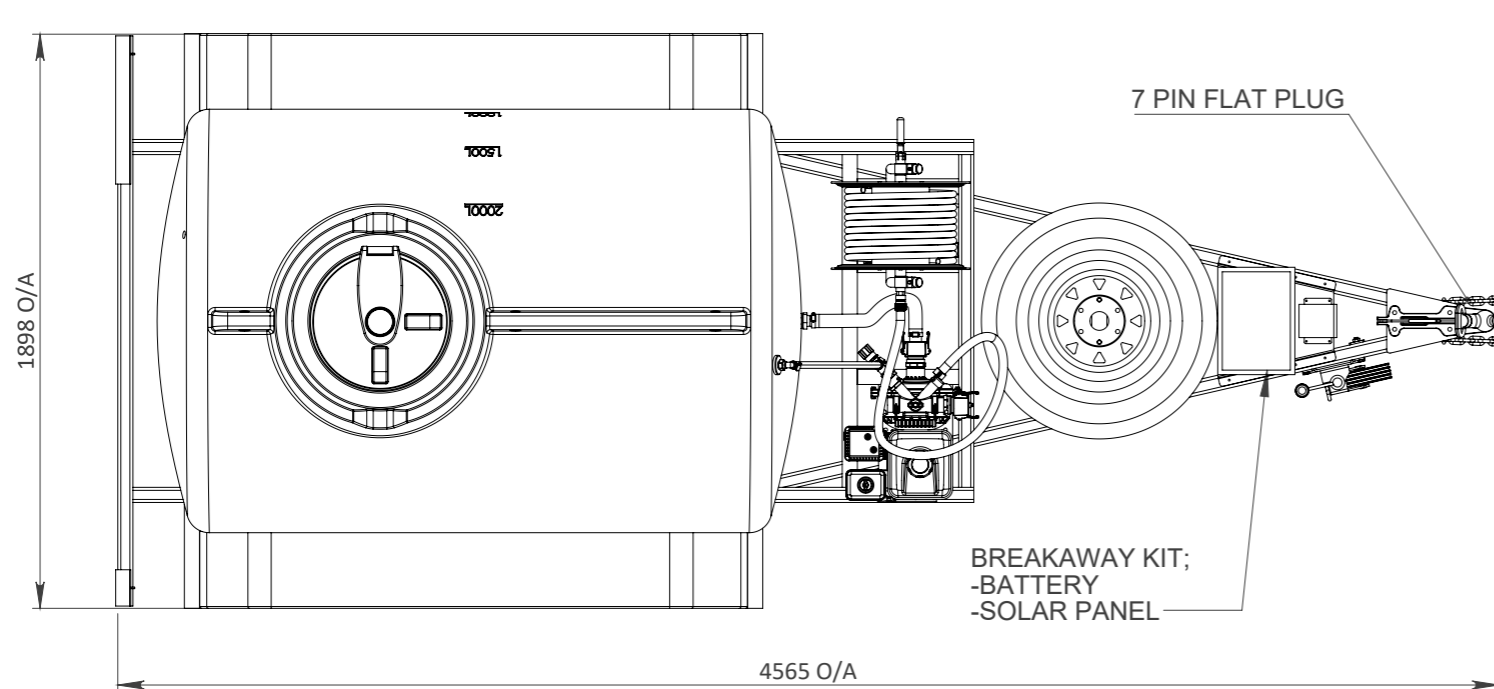


2,000 L CARTAGE TANK TRAILER

FFAR500.4010.2



TARE WEIGHT - 670 kg APPROX
 ATM (AGGREGATE TRAILER MASS) - 2,670 kg APPROX
 TOW BALL WEIGHT (FULLY LOADED) - 210-220 kg APPROX

ITEM	DESCRIPTION	DETAILS
1	2,000 L Water Cartage Tank	Blue Polyethylene
2	2,000 L Cartage Trailer	Hot dip Galvanised Steel Frame (RUR-TRAILER-2000)
3	19mm Silvan Hose Reel	30m Hose Length with Spray Nozzle
4	40mm Davey GX160 Pump	3.6 L Honda GX 160
5	1-1/2" Philmac Ball Valve	Water Cut Off at Tank
6	1-1/2" Camlock Outlet	Outlet For Larger Hose Mounting
7	Pressure Relief Valve and Hose	Pressure Relief and Return Hose for Pump
8	455mm Manhole Hatch	Hinged and Vented
9	Pin Mounting System	Engineer Certified (PARBKT0119)
10	Wheel Dimentions	R16" x 235 mm LT

A	26/05/2021	AS BUILT	MC	DH	
B	29/11/2021	ENGINEERING UPDATES	MC	DH	
REV	DATE	REVISION DESCRIPTION	DRAWN	CHKD.	ENG.