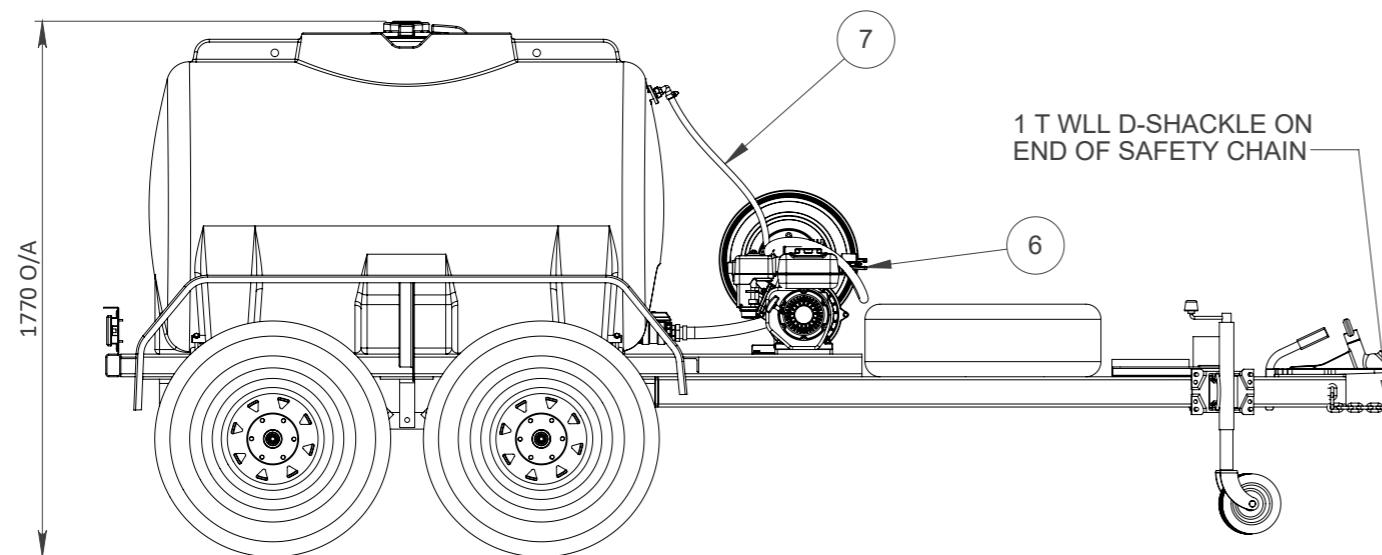
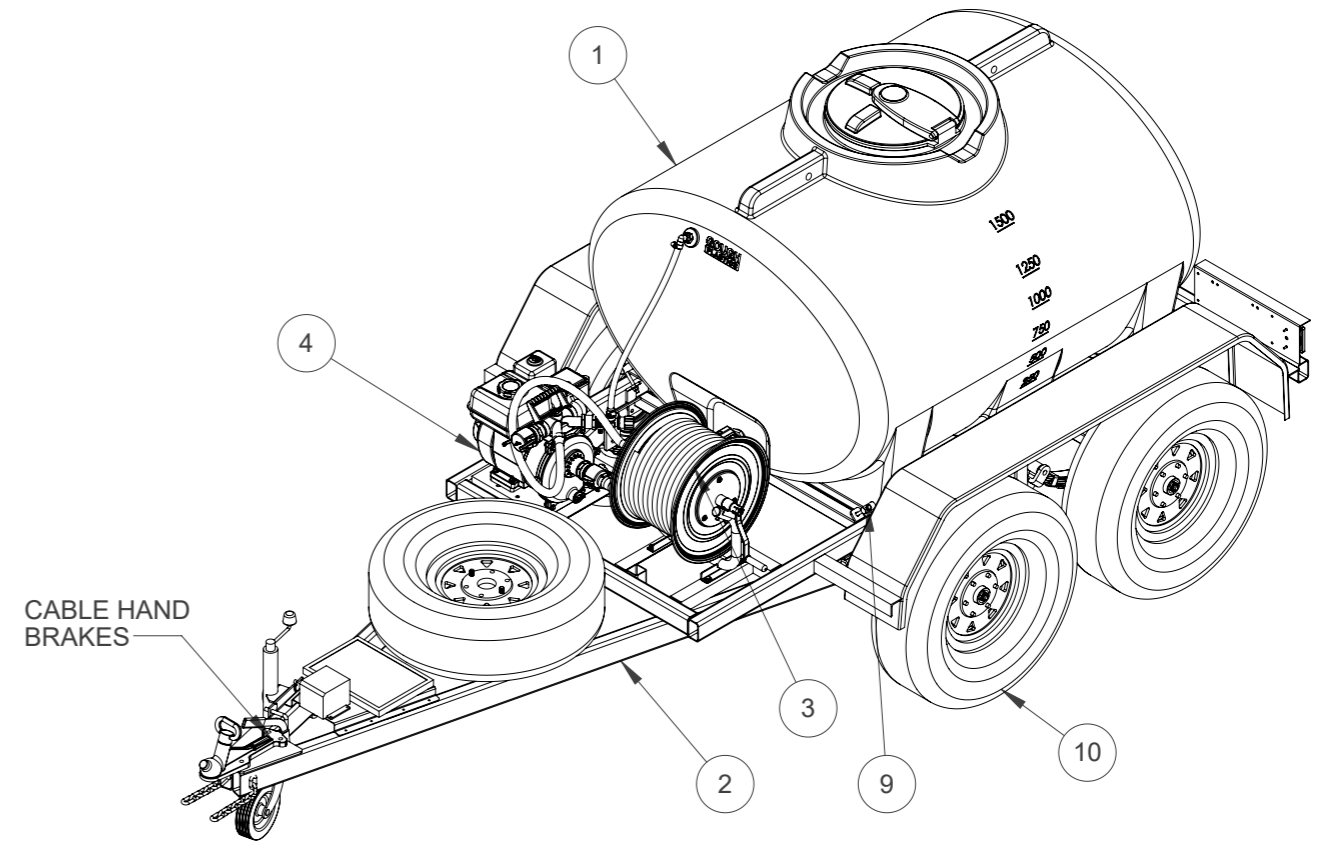
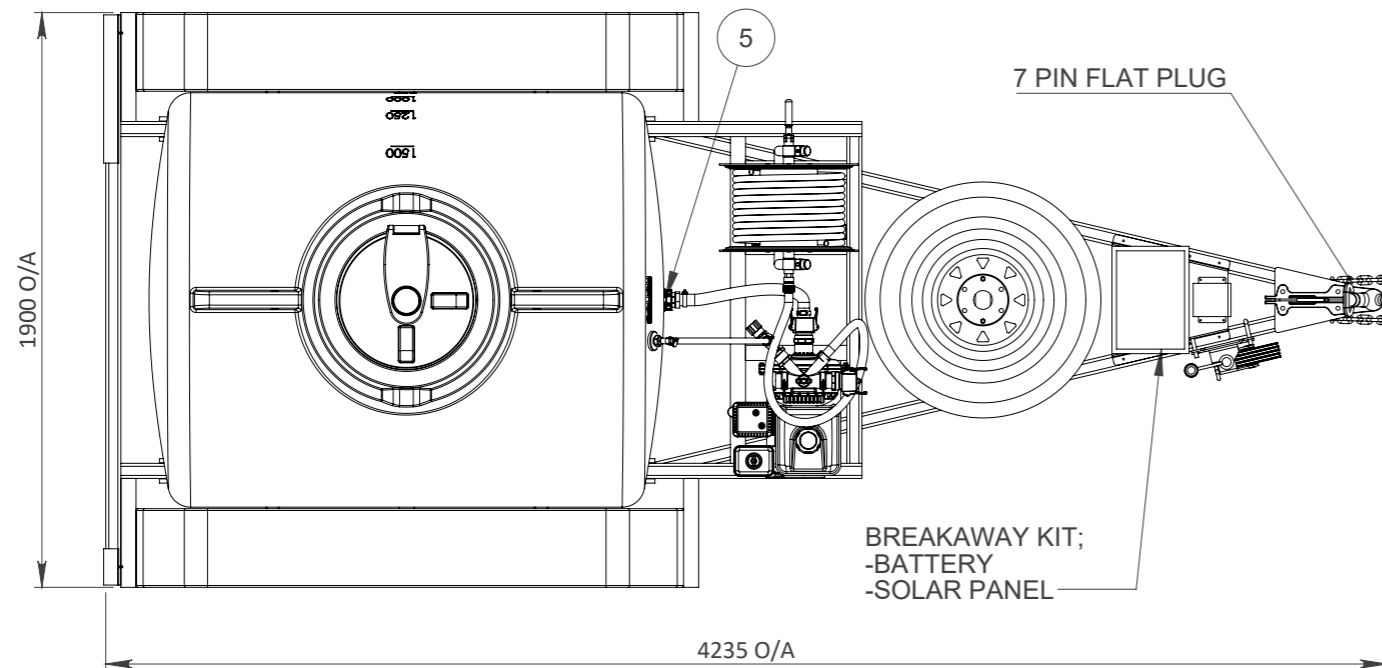


1,500 L CARTAGE TANK TRAILER

FFAR500.4010.15



TARE WEIGHT - (625 EST) kg APPROX
 ATM (AGGREGATE TRAILER MASS) - (2,125 EST) kg APPROX
 TOW BALL WEIGHT (FULLY LOADED) - (195-205 EST) kg APPROX

ITEM	DESCRIPTION	DETAILS
1	1,500 L Water Cartage Tank	Blue Polyethylene
2	1,500 L Cartage Trailer	Hot dip Galvanised Steel Frame (RUR-TRAILER-1500)
3	19mm Silvan Hose Reel	30m Hose Length with Spray Nozzle
4	40mm Davey GX160 Pump	3.6 L Honda GX 160
5	1-1/2" Philmac Ball Valve	Water Cut Off at Tank
6	1-1/2" Camlock Outlet	Outlet For Larger Hose Mounting
7	Pressure Relief Valve and Hose	Pressure Relief and Return Hose for Pump
8	455mm Manhole Hatch	Hinged and Vented
9	Pin Mounting System	Engineer Certified (PARBKT0119)
10	Wheel Dimentions	R16" x 235 mm LT

A	2/12/2021	AS BUILT	MC	DH	
REV	DATE	REVISION DESCRIPTION	DRAWN	CHKD.	ENG.



A.C.N. 010 028 547
 Gough Industries Pty. Ltd.
 833 Ingham Road
 Bohle, Townsville
 P.O. Box 7570, Garbutt BC, Qld. 4814.
 Telephone 07 47747606
 www.gough.com.au

Dimensions are in millimetres (mm) unless noted.

CLIENT LOGO.	1500 L Trailer Sales Drawing		REVISION
SCALE	NTS	A3	A
GOUGH PLASTICS DRAWING No.		FFAR500.4010.15	
SOLDWORKS: S:\Solidworks\Rural\Cartage Tanks\Cartage Trailers\1500 L Trailer\1500 L FireFighter Trailer			
PDF. FILE PATH: S:\Products\Rural\Marketing Rural\Cartage Tanks\Cartage Trailers\1500 L Cartage Trailer			