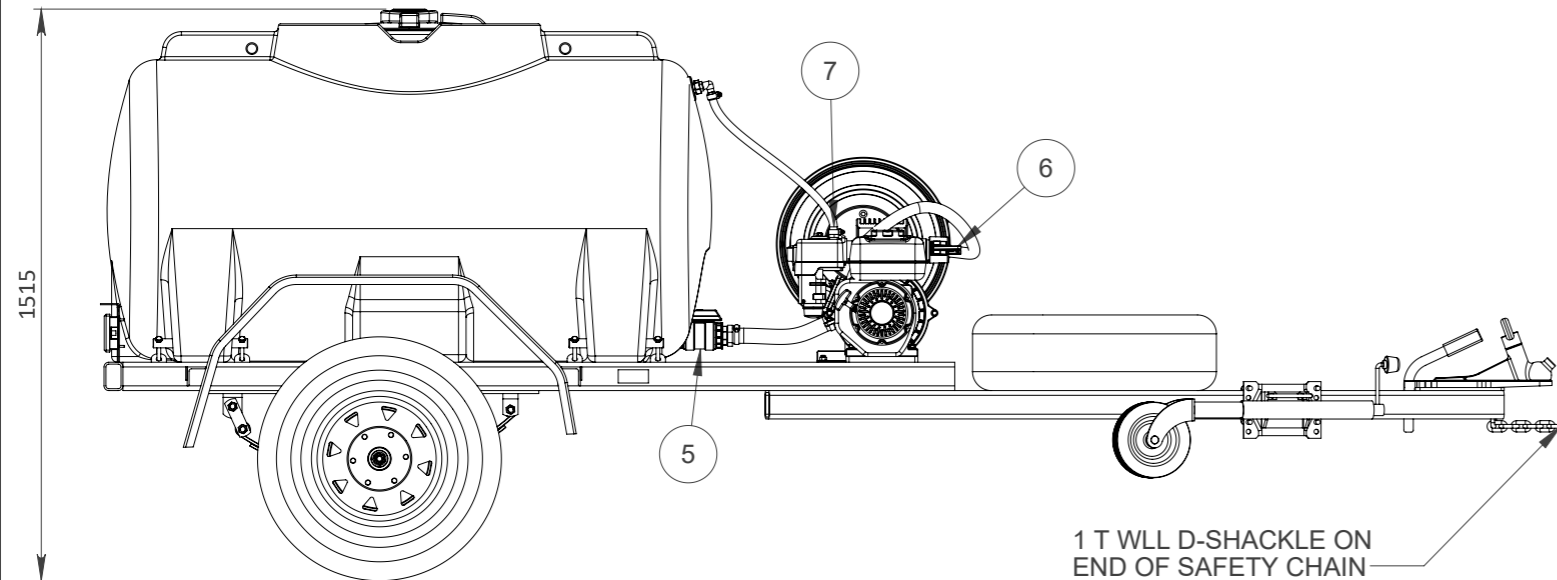
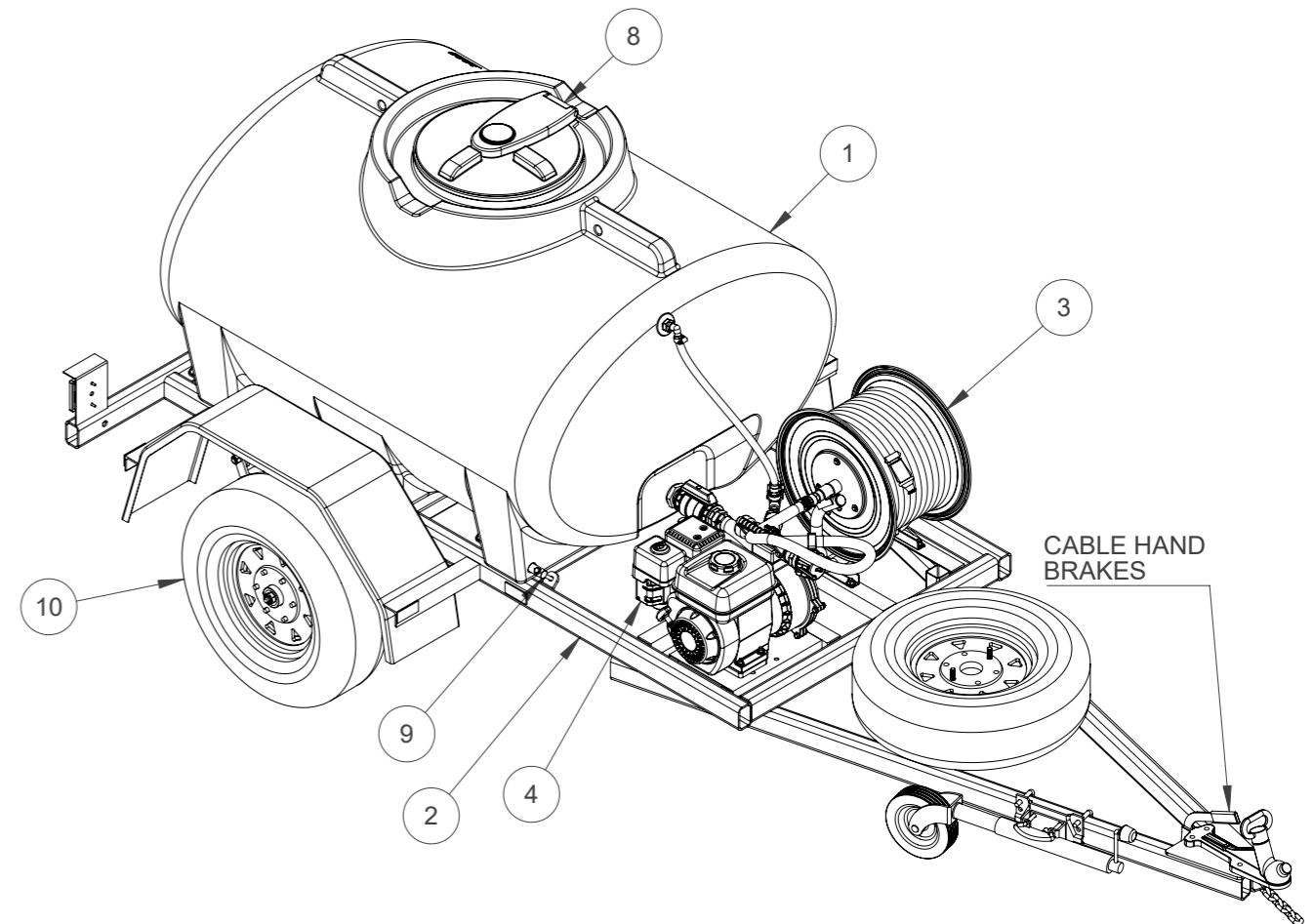
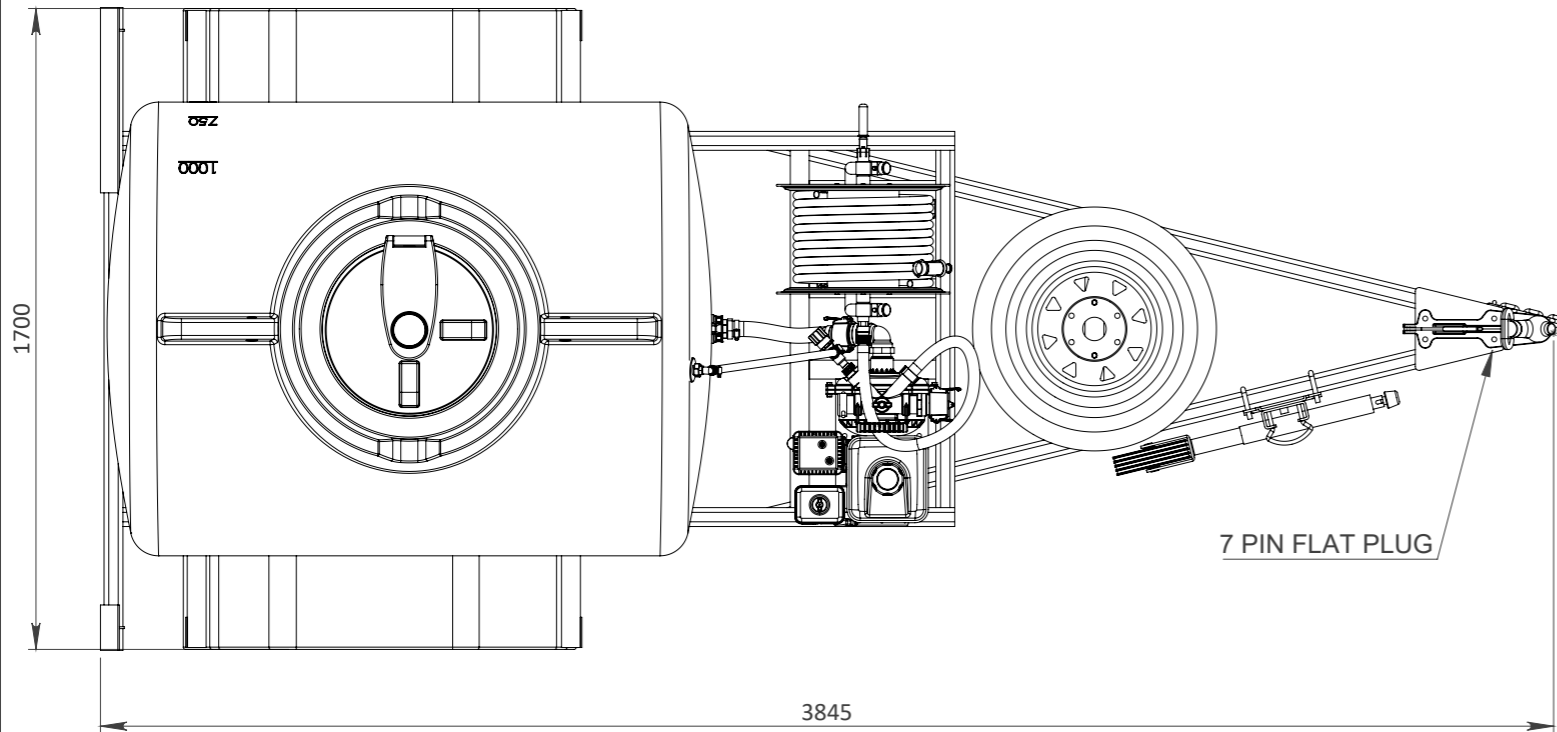


1,000 L CARTAGE TANK TRAILER

FFAR500.4010.1



TARE WEIGHT - 400 kg APPROX
 ATM (AGGREGATE TRAILER MASS) - 1,450 kg APPROX
 TOW BALL WEIGHT (FULLY LOADED) - 110-120 kg APPROX

ITEM	DESCRIPTION	DETAILS
1	1,000 L Water Cartage Tank	Blue Polyethylene
2	1,000 L Cartage Trailer	Hot dip Galvanised Steel Frame (RUR-TRAILER- 1000)
3	19mm Silvan Hose Reel	30m Hose Length with Spray Nozzle
4	40mm Davey GX160 Pump	3.6 L Honda GX 160
5	1-1/2" Philmac Ball Valve	Water Cut Off at Tank
6	1-1/2" Camlock Outlet	Outlet For Larger Hose Mounting
7	Pressure Relief Valve and Hose	Pressure Relief and Return Hose for Pump
8	455mm Manhole Hatch	Hinged and Vented
9	Pin Mounting System	Engineer Certified (PARBKT0119)
10	Wheel Dimentions	R14" x 185 mm LT

A	10/09/2020	AS BUILT	MC	DH	
B	01/04/2021	UPDATED DESIGN	MC	DH	
C	29/11/2021	ENGINEERING UPDATES	MC	DH	
REV	DATE	REVISION DESCRIPTION	DRAWN	CHKD.	ENG.